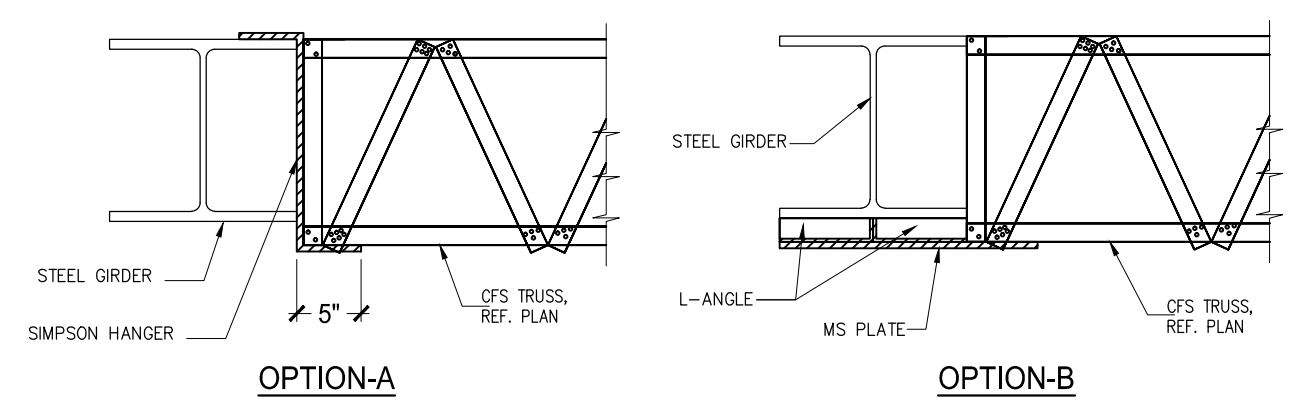
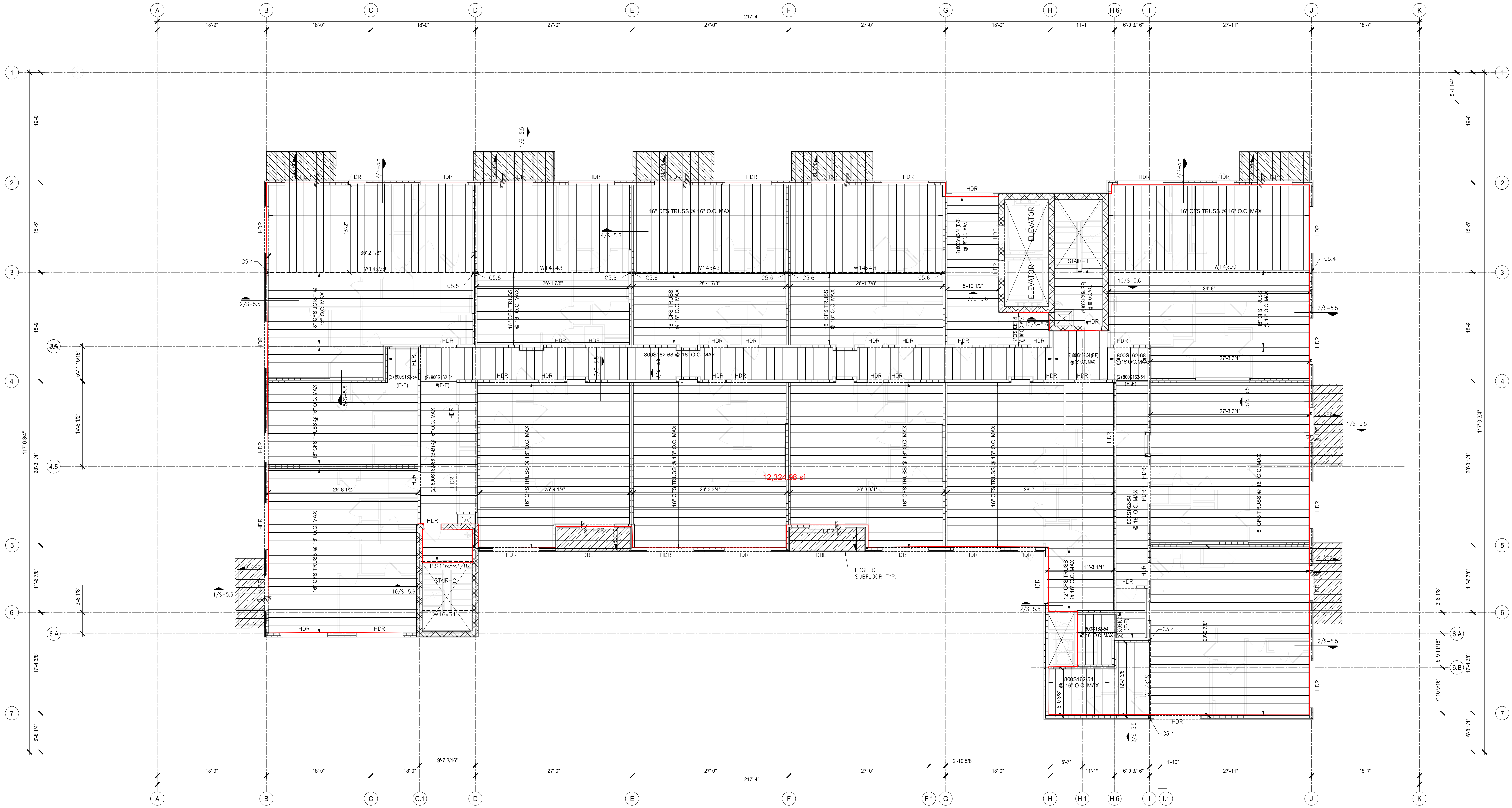


| Legend      |           |      |
|-------------|-----------|------|
| Description | Quantity  | Unit |
| Trusses     | 12,324.98 | sf   |



2 TYP. CONNECTION DETAIL OF STEEL GIRDER WITH CFS TRUSS  
SCALE: N.T.S.



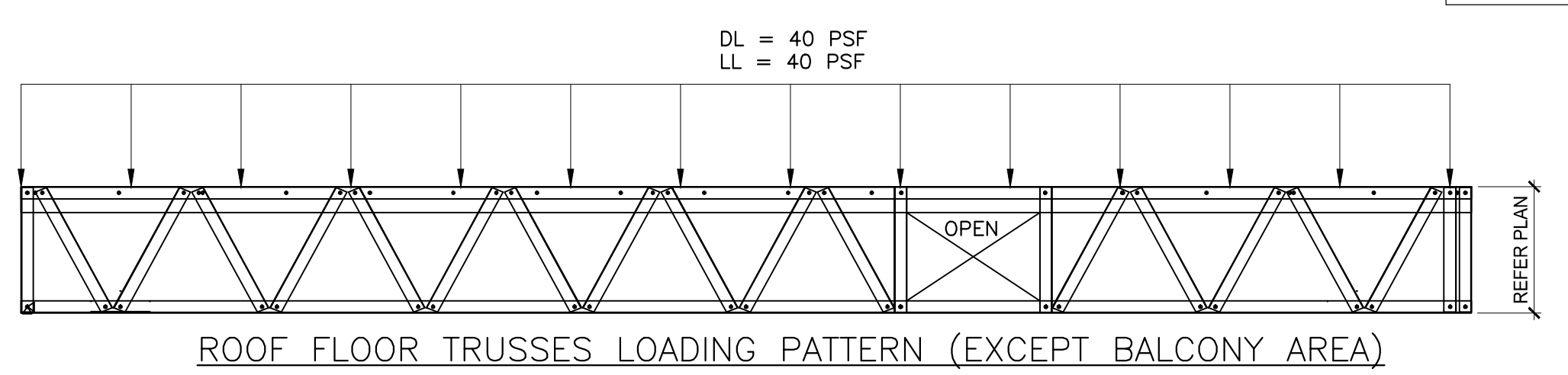
1 5TH FLOOR FRAMING PLAN  
SCALE: 1/8"=1'-0"

| Column | Section             |
|--------|---------------------|
| C5.4   | HSS5x5x1/2          |
| C5.5   | HSS6x3x1/2          |
| C5.6   | HSS5x3x1/2          |
| C5.7   | HSS 5 1/2 x 5 x 3/8 |

| FLOOR LEVEL | EXTERIOR WALLS (5 1/2" WALL)         | INTERIOR WALLS (5 1/2" WALL)         | INTERIOR WALLS (3 5/8" WALL)        |
|-------------|--------------------------------------|--------------------------------------|-------------------------------------|
| 4TH FLOOR   | (2) S50S162-68 (B-B) @1'-4" O.C. MAX | (2) S50S162-68 (B-B) @1'-4" O.C. MAX | (2) 362S162-68(B-B) @1'-4" O.C. MAX |
| 5TH FLOOR   | (2) S50S162-54 (B-B) @1'-4" O.C. MAX | (2) S50S162-54 (B-B) @1'-4" O.C. MAX | (2) 362S162-54(B-B) @1'-4" O.C. MAX |
| 6TH FLOOR   | (2) S50S162-54 (B-B) @1'-4" O.C. MAX | (2) S50S162-54 (B-B) @1'-4" O.C. MAX | (2) 362S162-54(B-B) @1'-4" O.C. MAX |
| ROOF        | (2) S50S162-43 (B-B) @1'-4" O.C. MAX | (2) S50S162-43 (B-B) @1'-4" O.C. MAX | (2) 362S162-43(B-B) @1'-4" O.C. MAX |
| UPPER ROOF  | S50S162-54 @1'-4" O.C. MAX           | -                                    | -                                   |

NOTE: ALL LISTED STUDS ARE BRACED AT 1/3 ON CENTER, BUT NOT MORE THAN 4'-0" O.C.

- PLAN NOTES:
- SEE S-1 SERIES FOR GENERAL NOTES.
  - SEE S-3 SERIES FOR FOUNDATION DETAILS.
  - SEE S-4 SERIES FOR FRAMING DETAILS.
  - TRUSS / TRUSS GIRDER SHALL BE DESIGNED BY TRUSS DESIGNER.
  - IN ADDITION TO THE FLOOR/ROOF LOAD, TRUSS/GIRDER TRUSS SHALL BE DESIGNED FOR THE ADDITIONAL LOAD AS SHOWN ON PLAN & FRAMING DETAILS, TYPICAL.



3/4" PLYWOOD SHEATHING EXPOSURE 1, T&G UNDERLAYMENT GRADE, APA SPAN RATED 24" O.C. OR EQUAL, PLACE AT RIGHT ANGLES TO FLOOR JOIST, STAGGER JOIST, GLUE AND NAIL W10d NAILS @ 6" AT EDGE AND 12" O.C IN FIELD

DESIGN BALCONY AREA FOR DL = 35 PSF & LL = 60 PSF  
CMU WALL

|   |                     |            |         |        |       |
|---|---------------------|------------|---------|--------|-------|
| PLAT #  | C.O.D BLDG PERMIT # |            |         |        |       |
| RD TRACKING #   | WWW TRACKING #      |            |         |        |       |
| <b>5TH FRAMING PLAN</b>                                 |                     |            |         |        |       |
| <b>BECKLEY &amp; 6TH &amp; UPPER FLOOR MULTI-FAMILY</b> |                     |            |         |        |       |
| <b>313 NORTH BECKLEY</b>                                |                     |            |         |        |       |
| <b>SUSTAINABLE DEV. &amp; CONSTRUCTION</b>              |                     |            |         |        |       |
| <b>CITY OF DALLAS, TX</b>                               |                     |            |         |        |       |
| CHECK   | DRAW                | DATE       | FILE NO | NUMBER | SHEET |
| BS  | RK                  | 07-06-2023 | 2020-27 | 2      | S-2.7 |

© 2020 UBS Engineering LLC All rights reserved.  
THIS DOCUMENT CONTAINS CONFIDENTIAL AND PROPRIETARY INFORMATION THAT IS UNLAWFULLY DISCLOSED, REPRODUCED OR DIVULGED, IN WHOLE OR IN PART, WITHOUT WRITTEN AUTHORIZATION BY UBS ENGINEERING LLC.

**UBS**  
Engineering, LLC  
555 Republic Dr, Suite 435  
Plano, TX 75074  
United States  
WWW.UBSENG.COM  
PH: 469-667-0403

**BECKLEY & 6TH & UPPER FLOOR MULTI-FAMILY  
313 NORTH BECKLEY;**

| REV. | DATE       | BY | DESCRIPTION |
|------|------------|----|-------------|
| 0    | 10-28-2024 | BS | 90% CD SET  |
| 1    | 11-08-2024 | BS | 95% CD SET  |

**S-2.7**