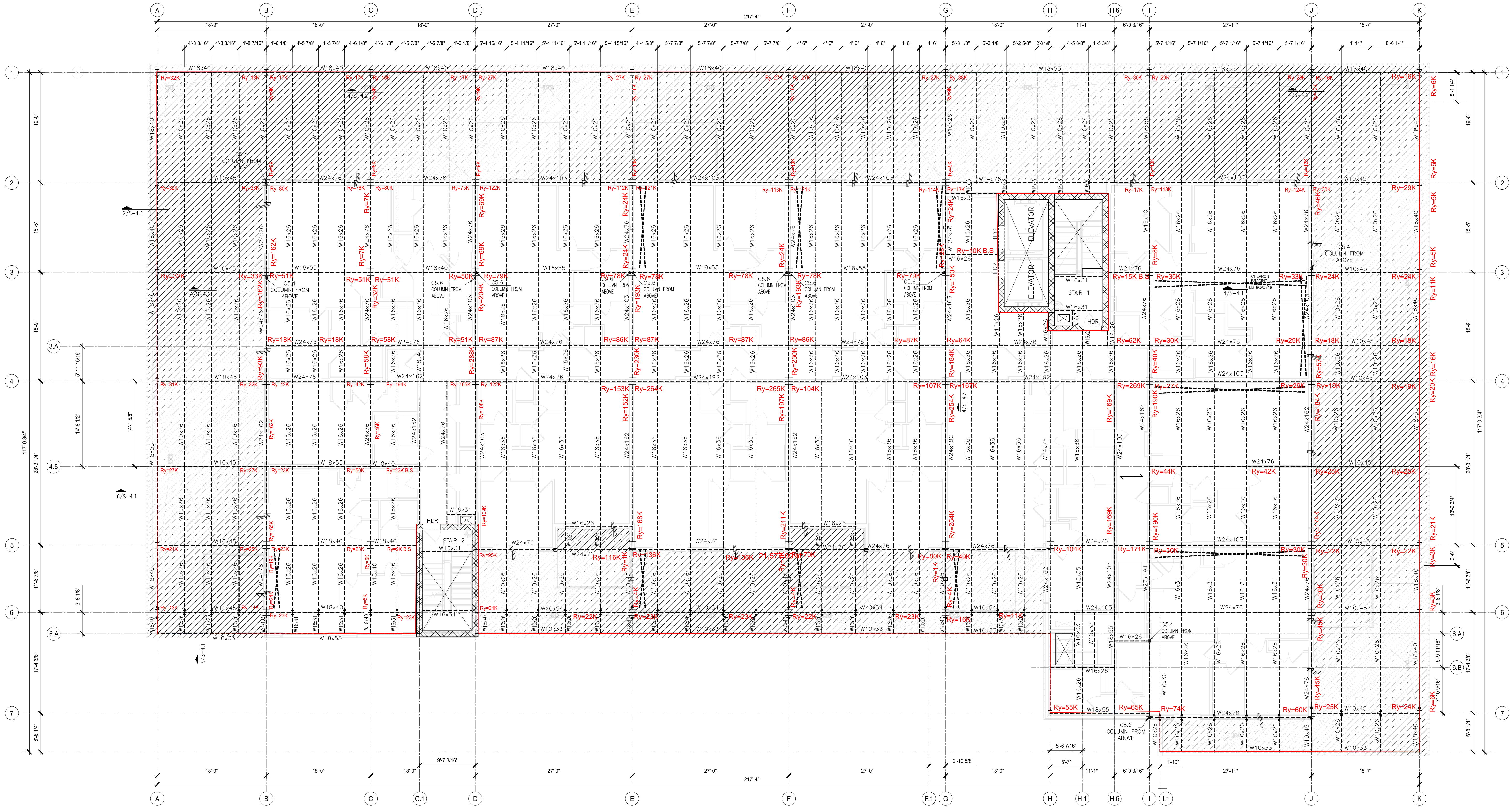


UPLIFT DUE TO WIND

Legend

Description	Quantity	Unit
Steel Beam	21,577.09	sf



1 3RD FLOOR FRAMING PLAN
SCALE: 1/8"=1'-0"

COLUMN SCHEDULE	
C5.4	HSS5x5x1/2
C5.5	HSS6x3x1/2
C5.6	HSS5x3x1/2
C5.7	HSS 5 1/2 x 5 1/2 x 3/8

LEGEND	
	MOMENT CONNECTION REF. 10/S-4.2
	DIAPHRAGM COLLECTOR ON TOP OF STEEL BEAM REF. 1/S-4.2 FOR DETAIL

PLAN NOTES:

- SEE S-1 SERIES FOR GENERAL NOTES.
- SEE S-3 SERIES FOR FOUNDATION DETAILS.
- SEE S-4 SERIES FOR FRAMING DETAILS.
- FLOOR CONSISTS OF 2VL-36 20 GA VULCRAFT DECK (OR APPROVED EQUIVALENT) W/ 3 1/2" NORMAL WEIGHT CONCRETE TOPPING (TOTAL THICKNESS = 5 1/2") W/ 6x6-W2.1xW2.1 WWR DRAPED PER 4/S-4.2 W/HIGH POINT AT BEAM AND LOW POINT MID-SPAN BETWEEN BEAMS. REF 9/S-4.6 FOR FASTENER DETAILS.
- FINAL BEAM SIZE NEEDS TO BE VERIFIED WITH ARCHITECTURAL FINISH

3/4" PLYWOOD SHEATHING EXPOSURE 1, T&G UNDERLAYMENT GRADE, APA SPAN RATED 24" O.C. OR EQUAL, PLACE AT RIGHT ANGLES TO FLOOR JOIST, STAGGER JOIST, GLUE AND NAIL W10d NAILS @ 6" AT EDGE AND 12" O.C IN FIELD

PLAT #	C.O.D BLDG PERMIT #				
RD TRACKING #	WWW TRACKING #				
3RD FRAMING PLAN					
BECKLEY & 6TH & UPPER FLOOR MULTI-FAMILY					
313 NORTH BECKLEY					
SUSTAINABLE DEV. & CONSTRUCTION					
CITY OF DALLAS, TX					
CHECK	DRAW	DATE	FILE NO	NUMBER	SHEET
BS	RK	07-06-2023	2020-27	2	S-2.5

© 2020 UBS Engineering LLC All rights reserved.
THIS DOCUMENT CONTAINS CONFIDENTIAL AND PROPRIETARY INFORMATION THAT IS NOT TO BE REPRODUCED, COPIED, OR TRANSMITTED IN ANY FORM OR BY ANY MEANS, ELECTRONIC OR MECHANICAL, INCLUDING PHOTOCOPYING, RECORDING, OR BY ANY INFORMATION STORAGE AND RETRIEVAL SYSTEM, WITHOUT THE WRITTEN PERMISSION OF UBS ENGINEERING LLC.
THE DRAWINGS, PLANS, MODELS, DESIGN SPECIFICATIONS, REPORTS, PHOTOGRAPHS, COMPUTED DATA, CALCULATIONS, AND OTHER DATA, INCLUDING ANY INFORMATION CONTAINED HEREIN, IS THE PROPERTY OF UBS ENGINEERING LLC. THE CONTRACT DOCUMENTS ARE MADE AVAILABLE FOR YOUR REVIEW AND APPROVAL ONLY IN CONNECTION WITH THE PROJECT. THE CONTRACT DOCUMENTS MAY BE CORRECTED, REVISIONS OR OTHERWISE, AND ANY SUCH CORRECTIONS, REVISIONS, OR OTHERWISE, SHALL BE THE PROPERTY OF UBS ENGINEERING LLC. THE CONTRACT DOCUMENTS ARE NOT TO BE REPRODUCED, COPIED, OR TRANSMITTED IN ANY FORM OR BY ANY MEANS, ELECTRONIC OR MECHANICAL, INCLUDING PHOTOCOPYING, RECORDING, OR BY ANY INFORMATION STORAGE AND RETRIEVAL SYSTEM, WITHOUT THE WRITTEN PERMISSION OF UBS ENGINEERING LLC.
THE CONTRACT DOCUMENTS ARE NOT TO BE REPRODUCED, COPIED, OR TRANSMITTED IN ANY FORM OR BY ANY MEANS, ELECTRONIC OR MECHANICAL, INCLUDING PHOTOCOPYING, RECORDING, OR BY ANY INFORMATION STORAGE AND RETRIEVAL SYSTEM, WITHOUT THE WRITTEN PERMISSION OF UBS ENGINEERING LLC.

UBS
Engineering, LLC
555 Republic Dr, Suite 435
Plano, TX 75074
United States
WWW.UBSENG.COM
PH: 469-667-0403

BECKLEY & 6TH & UPPER FLOOR MULTI-FAMILY
313 NORTH BECKLEY;

REV.	DATE	BY	DESCRIPTION
0	10-26-2024	BS	90% CD SET
1	11-08-2024	BS	95% CD SET

S-2.5