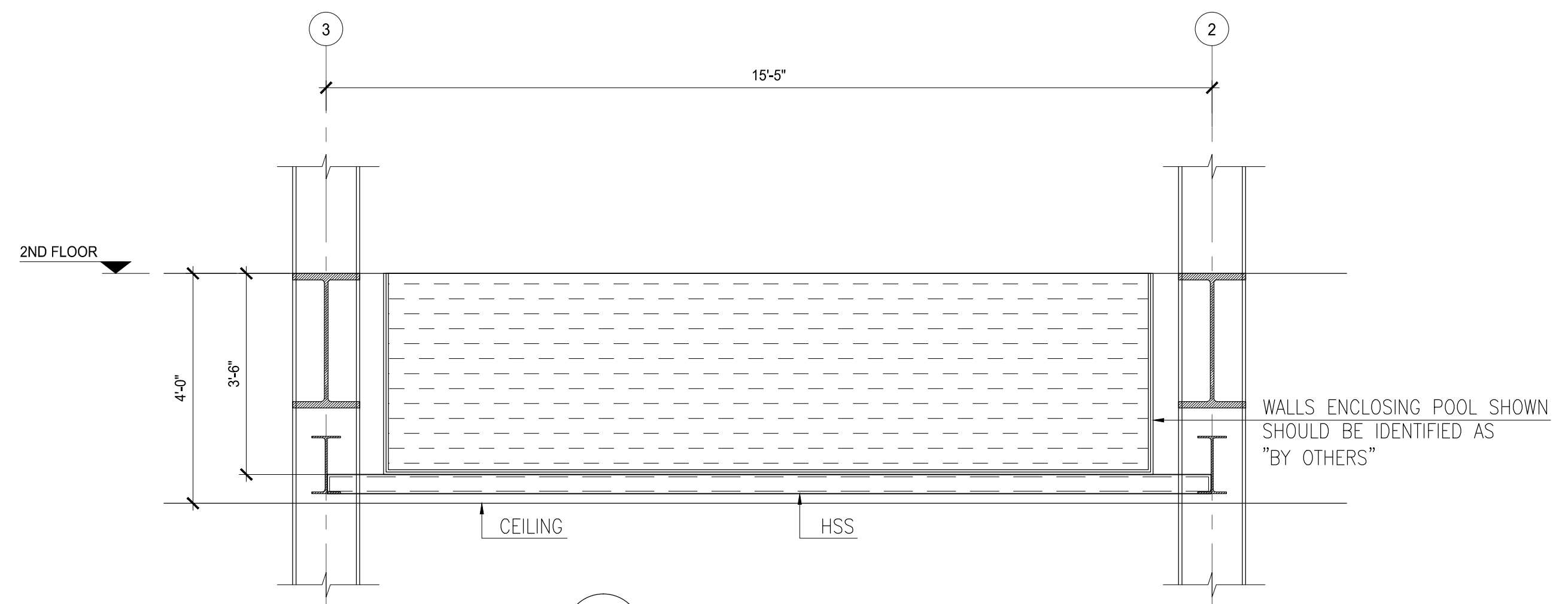
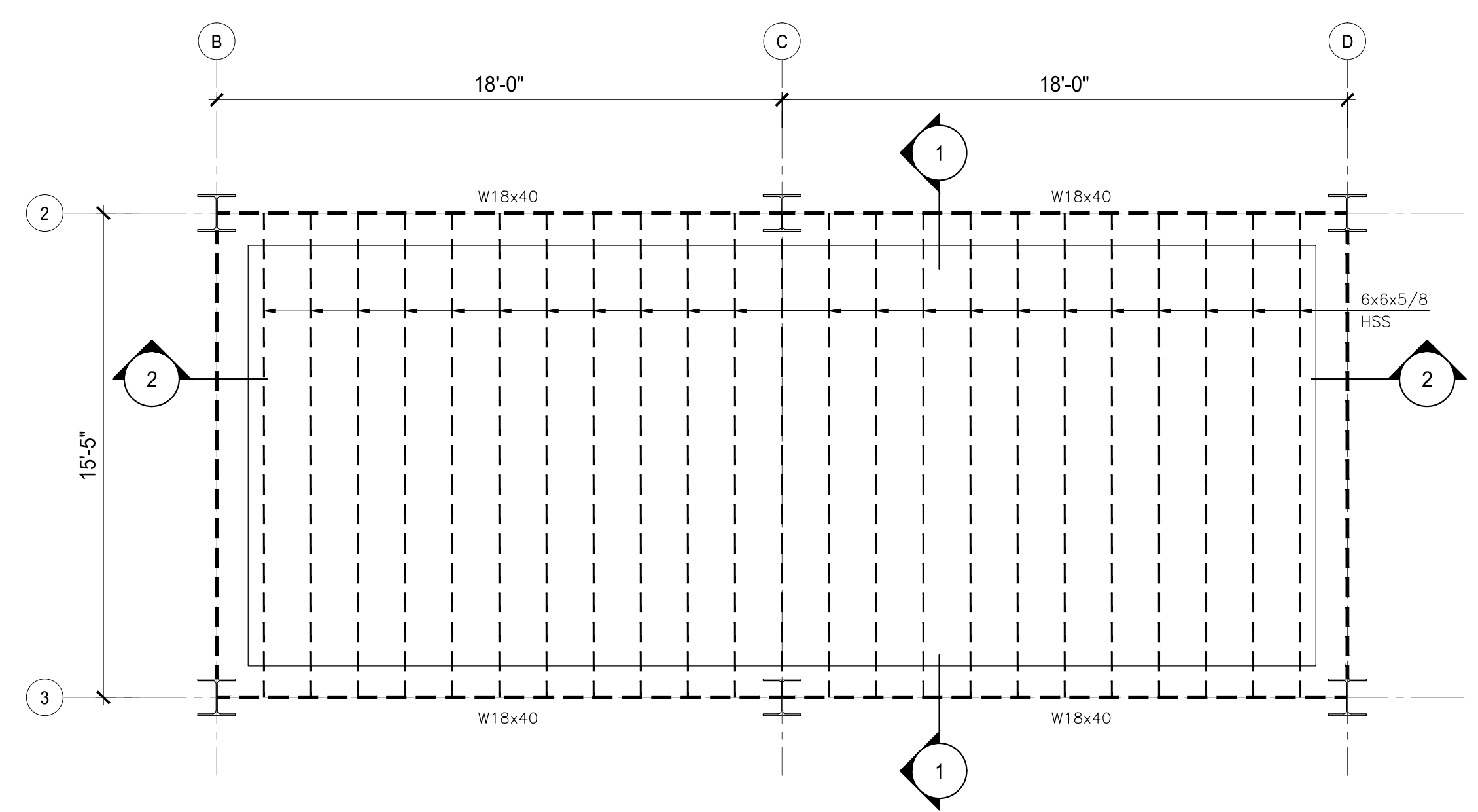


**2 SECTION**  
SCALE: 1/2"=1'-0"



**1 SECTION**  
SCALE: 1/2"=1'-0"



**1 PROPOSED POOL FRAMING PLAN**  
SCALE: 1/4"=1'-0"

METAL DECK W/ CONCRETE NOTED ON SHEETS - SHOULD BE POURED TOPPING OVER SHEATHING ON FLRS 4 THRU ROOF - MATCH ARCH. W/6x6-W2.1x2.1 WWR DRAPED PERX/SXX W/HIGH POINT AT BEAM AND LOW POINT AT MID-SPAN BETWEEN BEAMS. (MAX SPAN 7'-0") (DECK SHALL SPAN FOR MINIMUM THREE (3) CONTINUOUS SPAN)

LEGEND	
	MOMENT CONNECTION REF: 10/S-4.2
	DIAPHRAGM COLLECTOR ON TOP OF STEEL BEAM. REF: 1/S-4.2 FOR DETAIL

- PLAN NOTES:**
- SEE S-1 SERIES FOR GENERAL NOTES.
  - SEE S-3 SERIES FOR FOUNDATION DETAILS.
  - SEE S-4 SERIES FOR FRAMING DETAILS.
  - FLOOR CONSISTS OF 2VL-36 20 GA VULCRAFT DECK (OR APPROVED EQUIVALENT) W/ 3 1/2" NORMAL WEIGHT CONCRETE TOPPING (TOTAL THICKNESS = 5 1/2") W/ 6x6-W2.1x2.1 WWR DRAPED PER 4/S-4.2 W/HIGH POINT AT BEAM AND LOW POINT MID-SPAN BETWEEN BEAMS. REF 5/S-4.6 FOR FASTENER DETAILS.
  - FINAL BEAM SIZE NEEDS TO BE VERIFIED WITH ARCHITECTURAL FINISH

PLAT #	C.O.D BLDG PERMIT #				
RD TRACKING #	WWW TRACKING #				
<b>2ND FLOOR PROPOSED POOL FRAMING PLAN</b>					
<b>BECKLEY &amp; 6TH &amp; UPPER FLOOR MULTI-FAMILY</b>					
<b>313 NORTH BECKLEY</b>					
<b>SUSTAINABLE DEV. &amp; CONSTRUCTION</b>					
<b>CITY OF DALLAS, TX</b>					
CHECK	DRAW	DATE	FILE NO	NUMBER	SHEET
BS	RK	07-06-2023	2020-27	2	S-2.4A

©2020 UBS Engineering LLC All rights reserved.  
THIS DOCUMENT CONTAINS CONFIDENTIAL AND PROPRIETARY INFORMATION THAT IS UNLAWFULLY DISCLOSED, REPRODUCED, OR DIVULGED, IN WHOLE OR IN PART, WITHOUT WRITTEN AUTHORIZATION FROM UBS ENGINEERING LLC.  
THE DRAWINGS, PLANS, MODELS, DETAILS, SPECIFICATIONS, REPORTS, PHOTOGRAPHS, COMPUTERS, SOFTWARE, CALCULATIONS AND OTHER DATA, INCLUDING COMPUTER PRINT-OUTS, CONTAINED IN THE CONTRACT DOCUMENTS ARE THE PROPERTY OF THE DESIGNER. THE CONTRACT DOCUMENTS ARE MADE AVAILABLE FOR YOUR REVIEW AND INFORMATION PURPOSES ONLY TO THE PROJECT. THE CONTRACT DOCUMENTS MAY NOT BE COPIED, REPRODUCED, OR DISTRIBUTED IN ANY MANNER WITHOUT THE WRITTEN PERMISSION OF THE DESIGNER. THE DESIGNER ASSUMES NO LIABILITY FOR ANY AND ALL OTHER ERRORS, OMISSIONS, OR STATUTORY REQUIREMENTS. THE USER OF THIS DOCUMENT IS ADVISED THAT THE CONTRACT DOCUMENTS, IF YOU RELY ON THE CONTRACT DOCUMENTS IN ANY WAY, YOU ASSUME THE ENTIRE RISK AS TO THE ACCURACY, COMPLETENESS, OR CONSISTENCY OF THE INFORMATION CONTAINED IN THE CONTRACT DOCUMENTS.

**UBS**  
Engineering, LLC  
555 Republic Dr, Suite-435  
Plano, TX 75074  
United States  
WWW.UBSENG.COM  
PH: 469-667-0403

**BECKLEY & 6TH & UPPER FLOOR MULTI-FAMILY  
313 NORTH BECKLEY;**

REV.	DATE	BY	DESCRIPTION
0	10-28-2024	BS	90% CD SET
1	11-08-2024	BS	95% CD SET

**S-2.4A**