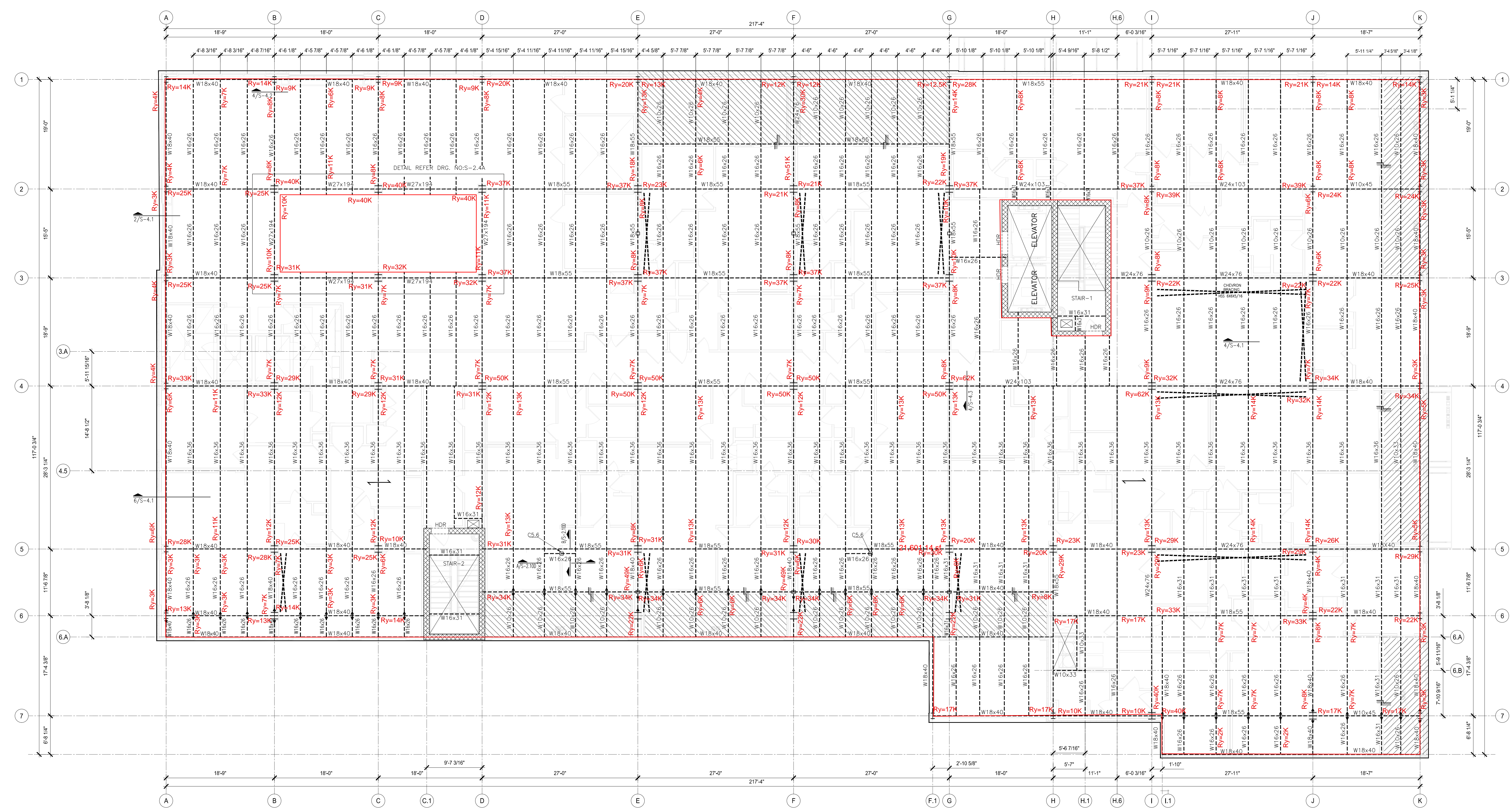


UPLIFT DUE TO WIND

Legend

Description	Quantity	Unit
Steel Beams	21,601.14	sf



1 2ND FLOOR FRAMING PLAN
SCALE: 1/8"=1'-0"

LEGEND

	MOMENT CONNECTION REF: 10/S-4.2
	DIAPHRAGM COLLECTOR ON TOP OF STEEL BEAM REF: 1/S-4.2 FOR DETAIL

METAL DECK W/ CONCRETE NOTED ON SHEETS - SHOULD BE POURED TOPPING OVER SHEATHING ON FLRS 4 THRU ROOF - MATCH ARCH, W/6x6-W2x12-1 WWR DRAPED PER/S3X W/HIGH POINT AT BEAM AND LOW POINT AT MID-SPAN BETWEEN BEAMS, (MAX SPAN 7'-0") (DECK SHALL SPAN FOR MINIMUM THREE (3) CONTINUOUS SPAN)

- PLAN NOTES:
- SEE S-1 SERIES FOR GENERAL NOTES.
 - SEE S-3 SERIES FOR FOUNDATION DETAILS.
 - SEE S-4 SERIES FOR FRAMING DETAILS.
 - FLOOR CONSISTS OF 2VL-36 20 GA VULCRUST DECK (OR APPROVED EQUIVALENT) W/ 3 1/2" NORMAL WEIGHT CONCRETE TOPPING (TOTAL THICKNESS = 5 1/2") W/ 6x6-W2x12-1 WWR DRAPED PER 4/S-4.2 W/HIGH POINT AT BEAM AND LOW POINT MID-SPAN BETWEEN BEAMS, REF 5/S-4.6 FOR FASTENER DETAILS.
 - FINAL BEAM SIZE NEEDS TO BE VERIFIED WITH ARCHITECTURAL FINISH

PLAT #	C.O.D BLDG PERMIT #				
RD TRACKING #	WWW TRACKING #				
2ND FRAMING PLAN					
BECKLEY & 6TH & UPPER FLOOR MULTI-FAMILY					
313 NORTH BECKLEY					
SUSTAINABLE DEV. & CONSTRUCTION					
CITY OF DALLAS, TX					
CHECK	DRAW	DATE	FILE NO	NUMBER	SHEET
BS	RK	07-06-2023	2020-27	2	S-2.4

© 2020 UBS Engineering LLC All rights reserved.
THIS DOCUMENT CONTAINS CONFIDENTIAL AND PROPRIETARY INFORMATION THAT IS UNCLASSIFIED OR DECLASSIFIED, IN WHOLE OR IN PART, WITHOUT WRITTEN AUTHORIZATION FROM UBS ENGINEERING LLC.
THE DRAWINGS, PLANS, MODELS, DESIGN SPECIFICATIONS, REPORTS, PHOTOGRAPHS, COMPUTED DATA, CALCULATIONS, AND OTHER DATA, INCLUDING INFORMATION CONTAINED HEREIN, ARE THE PROPERTY OF UBS ENGINEERING LLC. NO PART OF THIS DOCUMENT IS TO BE REPRODUCED, COPIED, OR TRANSMITTED IN ANY FORM OR BY ANY MEANS, ELECTRONIC OR MECHANICAL, INCLUDING PHOTOCOPYING, RECORDING, OR BY ANY INFORMATION STORAGE AND RETRIEVAL SYSTEM, WITHOUT THE WRITTEN PERMISSION OF UBS ENGINEERING LLC. UBS ENGINEERING LLC ASSUMES NO LIABILITY FOR ANY ERRORS, OMISSIONS, OR INADEQUACIES IN THIS DOCUMENT. THE USER SHALL BE RESPONSIBLE FOR OBTAINING ALL NECESSARY PERMITS AND APPROVALS FROM THE APPROPRIATE AGENCIES. UBS ENGINEERING LLC IS NOT PROVIDING ANY DESIGN OR CONSTRUCTION SERVICES IN ANY STATE WHERE IT IS NOT LICENSED TO DO SO. UBS ENGINEERING LLC IS NOT PROVIDING ANY DESIGN OR CONSTRUCTION SERVICES IN ANY STATE WHERE IT IS NOT LICENSED TO DO SO.

UBS
Engineering, LLC
555 Republic Dr, Suite 435
Plano, TX 75074
United States
WWW.UBSENG.COM
PH: 469-667-0403

BECKLEY & 6TH & UPPER FLOOR MULTI-FAMILY 313 NORTH BECKLEY;

REV.	DATE	BY	DESCRIPTION
0	10-26-2024	BS	90% CD SET
1	11-08-2024	BS	95% CD SET

S-2.4