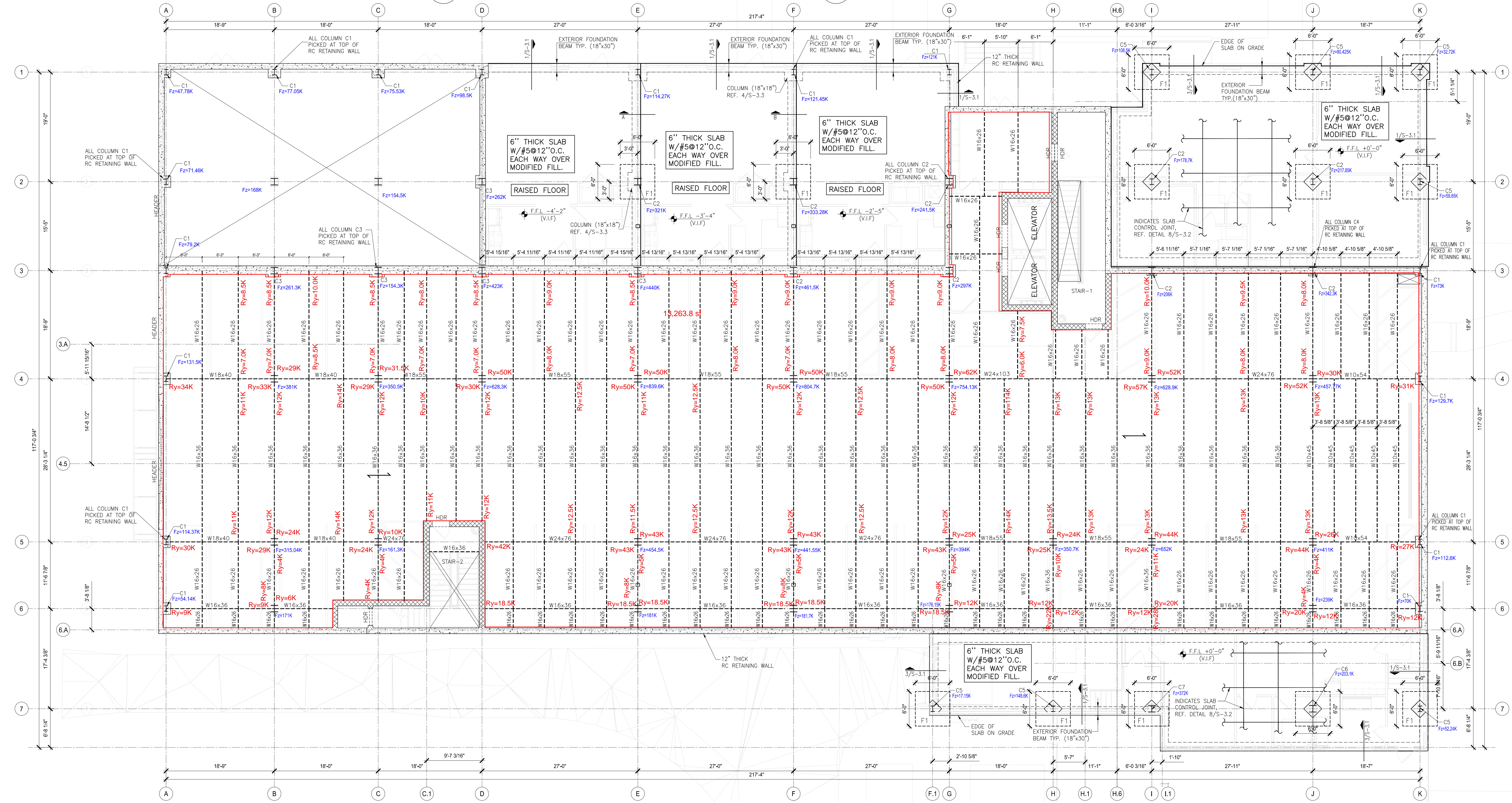
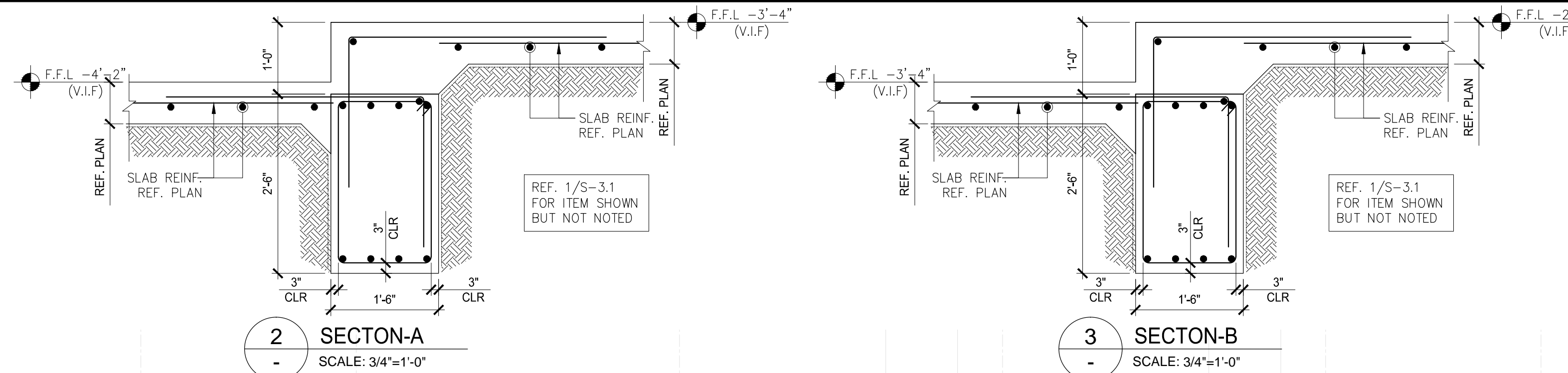


**UPLIFT DUE TO WIND**  
**UPLIFT DUE TO SEISMIC FORCES**

**Legend**  
Description Quantity Unit  
Steel Beams 13,263.80 sf

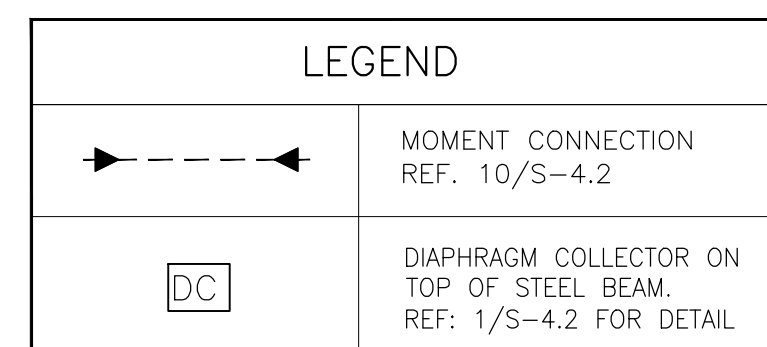
REACTIONS AT SERVICE 1.0 DL+1.0 LL UNITS KIP  
Fz ↑



**PIERS ARE FOR INFORMATION PURPOSE ONLY IT WILL BE GEOPIERS BY OTHERS**

FOOTING SCHEDULE				
MARK	LENGTH	WIDTH	MIN. DEPTH	REBAR
F1	6'-0"	6'-0"	3'-0"	#6 @ 6" O.C. 1&B EACH WAY

BASE PLATE SCHEDULE		
COLUMN DESIGNATION	BASE PLATE (LxDxH)	BOLTS
C1-W12x40	16"x16"x11"	(4) 1 1/2" #
C2-W14x90	24"x24"x22"	(6) 1 1/2" #
C3-W14x109	24"x24"x22"	(6) 1 1/2" #
C5-W12x50	16"x16"x11"	(4) 1 1/2" #
C6-W14x90	24"x24"x22"	(6) 1 1/2" #
C7-W14x120	26"x26"x22"	(6) 1 1/2" #



**PLAN NOTES:**

- SEE S-1 SERIES FOR GENERAL NOTES.
- SEE S-3 SERIES FOR FOUNDATION DETAILS.
- SEE S-4 SERIES FOR FRAMING DETAILS.
- FLOOR CONSISTS OF 2" - 36 GA VULCRAFT DECK (OR APPROVED EQUIVALENT) W/ 3 1/2" NORMAL WEIGHT CONCRETE TOPPING (TOTAL THICKNESS = 5 1/2") W/ 6#x-W2.1 WWR DRAPED PER 4/S-4.2 W/HIGH POINT AT BEAM AND LOW POINT MID-SPAN BETWEEN BEAMS. REF. 5/S-4.6 FOR FASTENER DETAILS.
- FINAL BEAM SIZE NEEDS TO BE VERIFIED WITH ARCHITECTURAL FINISH.

METAL DECK W/ CONCRETE NOTED ON SHEETS - SHOULD BE POURED TOPPING OVER SHEATHING ON FLRS 4 THRU ROOF - MATCH ARCH. W/5/6-W2.1&2.1 WWR DRAPED PER 5/S-4.2 W/HIGH POINT AT BEAM AND LOW POINT AT MID-SPAN BETWEEN BEAMS. (MAX SPAN 7'-0") (DECK SHALL SPAN FOR MINIMUM THREE (3) CONTINUOUS SPAN)

PLAT #	C.O.D. BLDG PERMIT #				
RD TRACKING #	WWW TRACKING #				
<b>1ST FLOOR FOUNDATION &amp; FRAMING PLAN</b>					
<b>BECKLEY &amp; 6TH &amp; UPPER FLOOR MULTI-FAMILY</b>					
<b>313 NORTH BECKLEY</b>					
<b>SUSTAINABLE DEV. &amp; CONSTRUCTION</b>					
<b>CITY OF DALLAS, TX</b>					
CHECK	DRAW	DATE	FILE NO	NUMBER	SHEET
BS	RK	07-06-2023	2020-27	2	S-2.3

© 2020 UBS Engineering LLC All rights reserved.  
THIS DOCUMENT CONTAINS CONFIDENTIAL AND PROPRIETARY INFORMATION THAT IS UNCLASSIFIED OR UNCONTROLLED, IN WHOLE OR IN PART, WITHOUT WRITTEN AUTHORIZATION FROM UBS ENGINEERING LLC.  
THE DRAWINGS, PLANS, MODELS, DESIGNS, SPECIFICATIONS, REPORTS, PHOTOGRAPHS, COMPUTED DATA, CALCULATIONS AND OTHER DATA, INCLUDING ANY INFORMATION CONTAINED HEREIN, IS THE PROPERTY OF UBS ENGINEERING LLC. NO PART OF THIS DOCUMENT IS TO BE REPRODUCED, COPIED, TRANSMITTED, OR DISTRIBUTED IN ANY MANNER WITHOUT THE WRITTEN PERMISSION OF UBS ENGINEERING LLC. UBS ENGINEERING LLC ACCEPTS NO LIABILITY FOR ANY ERRORS, OMISSIONS, OR INADEQUACIES IN THIS DOCUMENT OR FOR ANY DAMAGE, INCLUDING CONSEQUENTIAL DAMAGES, ARISING FROM THE USE OF THIS DOCUMENT. THE USER OF THIS DOCUMENT SHALL BE RESPONSIBLE FOR OBTAINING ALL NECESSARY PERMITS AND APPROVALS FROM THE APPROPRIATE AGENCIES. UBS ENGINEERING LLC IS NOT PROVIDING ANY PROFESSIONAL ENGINEERING OR ARCHITECTURAL SERVICES. THE USER OF THIS DOCUMENT SHALL BE RESPONSIBLE FOR OBTAINING ALL NECESSARY PERMITS AND APPROVALS FROM THE APPROPRIATE AGENCIES. UBS ENGINEERING LLC IS NOT PROVIDING ANY PROFESSIONAL ENGINEERING OR ARCHITECTURAL SERVICES.

**UBS**  
Engineering, LLC  
555 Republic Dr, Suite-435  
Plano, TX 75074  
United States  
WWW.UBSENG.COM  
PH: 469-667-0403

**BECKLEY & 6TH & UPPER FLOOR MULTI-FAMILY**  
**313 NORTH BECKLEY;**

REV.	DATE	BY	DESCRIPTION
0	10-28-2024	BS	90% CD SET
1	11-08-2024	BS	95% CD SET

**S-2.3**