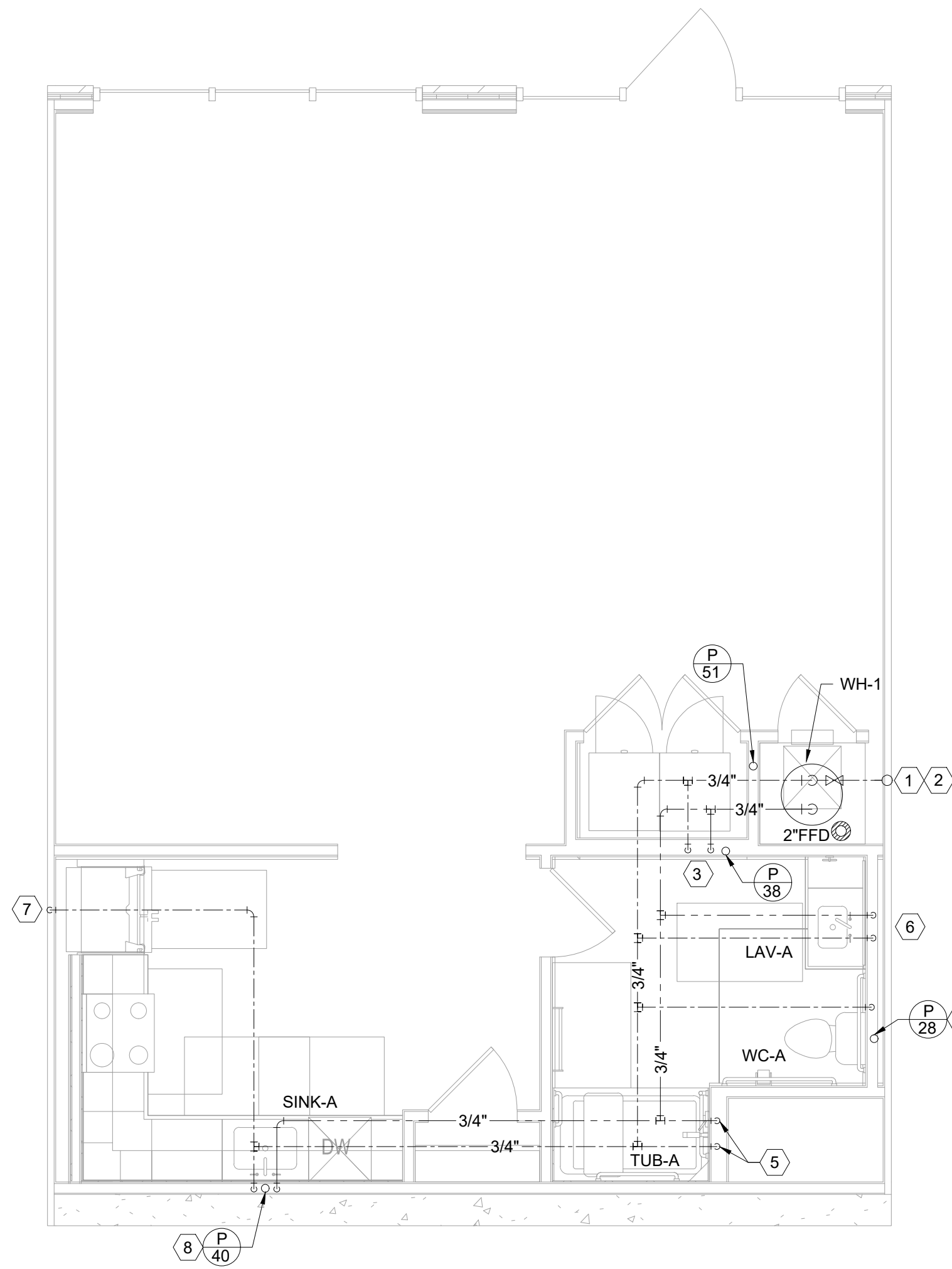


4 UNIT S1 - PLUMBING
1/4"=1'-0"

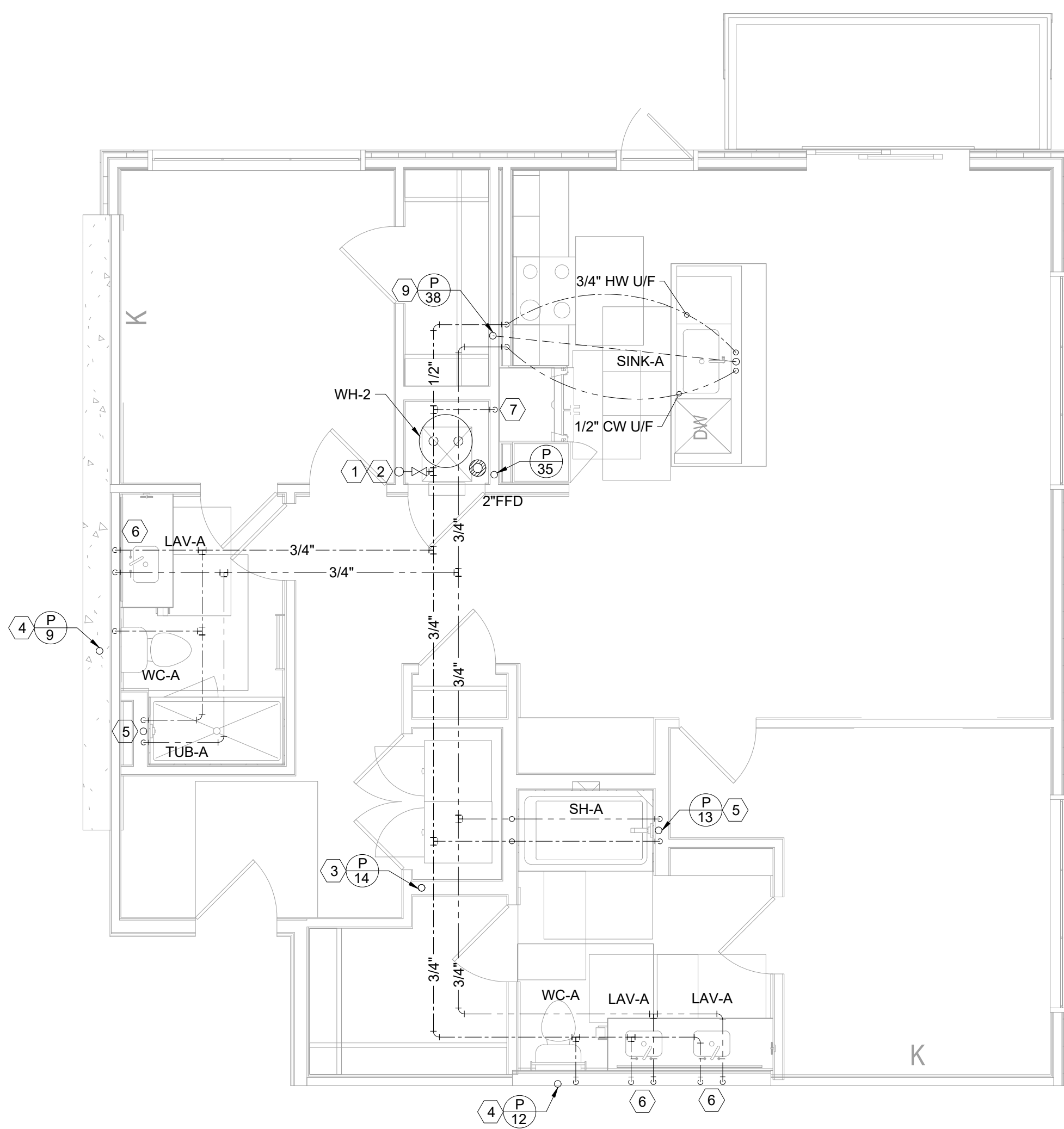


5 FLEX WORK/LIVE - PLUMBING
1/4"=1'-0"

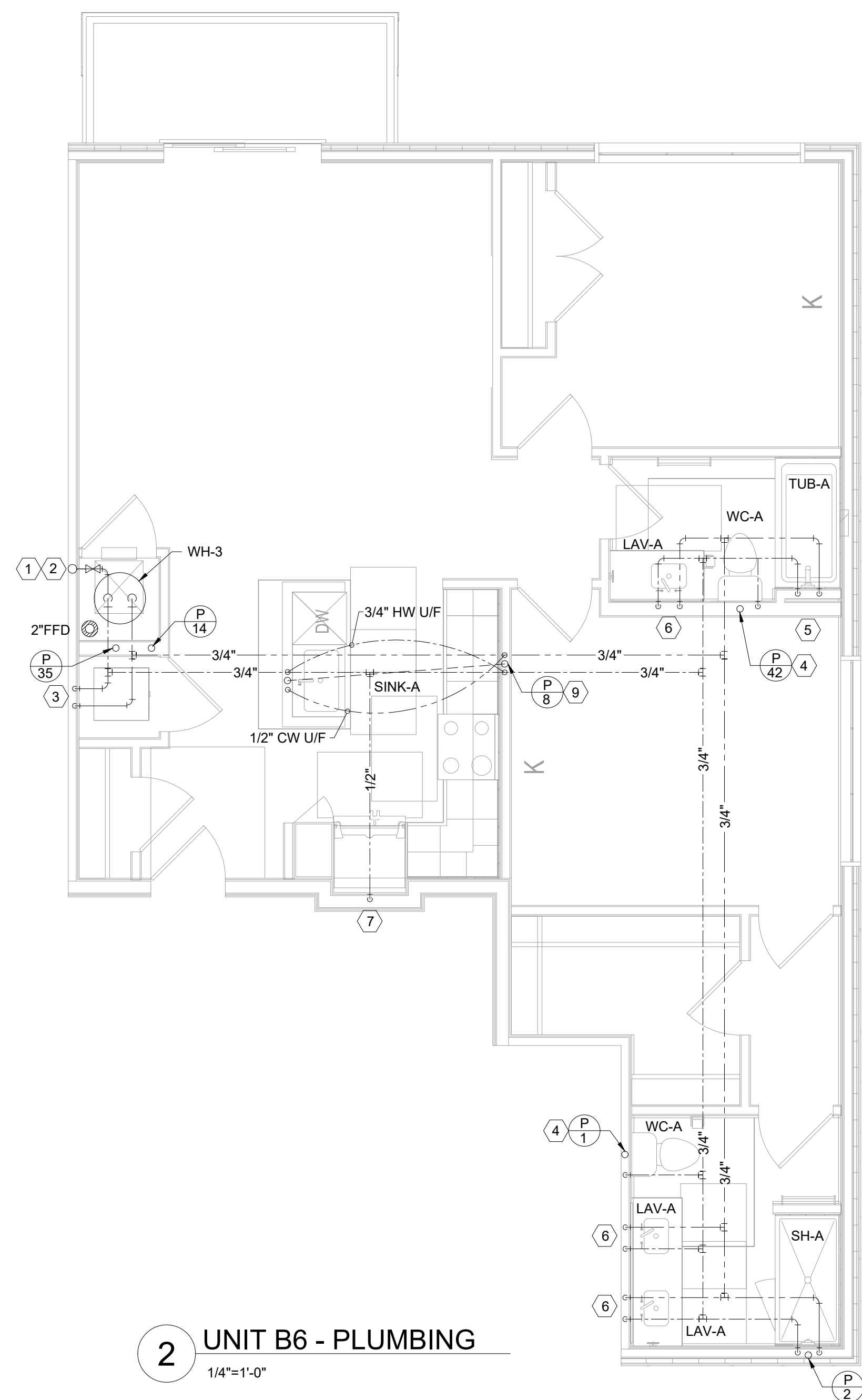
- PLUMBING KEY NOTES:**
- 1 3/4" DOMESTIC WATER SERVICE WITH SHUT-OFF VALVE
 - 2 3/4" CW AND HW DN TO WATER HEATER
 - 3 1/2" CW AND HW DN IN WALL TO WASHER BOX
 - 4 1/2" CW DN IN WALL TO WC
 - 5 1/2" CW AND HW DN IN WALL TO TUB/SH
 - 6 1/2" CW AND HW DN IN WALL TO LAV
 - 7 1/2" CW DN TO ICEMAKER
 - 8 1/2" CW AND 3/4" HW DN IN WALL. EXTEND 1/2" CW UP TO SINK AND EXTEND 1/2" HW EACH TO SINK AND DW
 - 9 1/2" CW AND 3/4" HW DN IN WALL. EXTEND 1/2" CW U/F AND UP TO ISLAND SINK AND EXTEND 1/2" HW U/F AND UP TO ISLAND SINK AND DW

GENERAL NOTE:
ALL DOMESTIC WATER PIPING IN EXTERIOR WALLS AND UNCONDITIONED SPACES TO BE INSULATED WITH UNICELLULAR FOAM, FLEXIBLE R-4 PIPE INSULATION.
NO DOMESTIC WATER PIPING IS TO BE RUN IN THE ATTIC SPACE. ALL DOMESTIC WATER SERVICE THAT SERVES UPPER MOST LEVEL OF BUILDING NEEDS TO BE FED FROM THE CEILING / FLOOR SPACE BELOW.
CONTRACTOR SHALL SUPPLY AND INSTALL 1/2" TRAP PRIMERS FOR ALL FLOOR DRAINS AND HUB

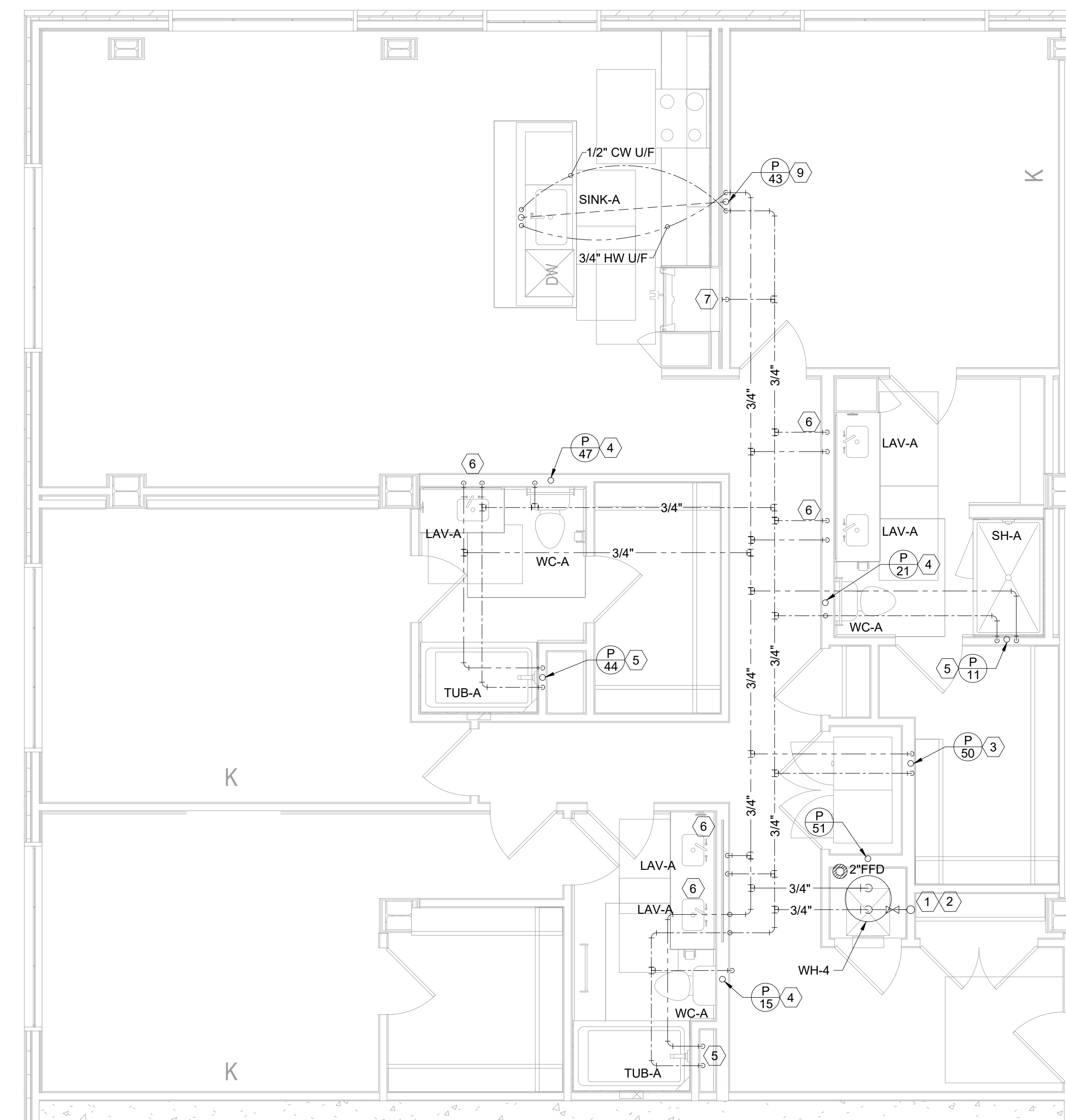
P REFER BUILDING PLAN FOR RISER TAG NUMBER AND
X SCHEDULE SHEET FOR RISER DETAILS



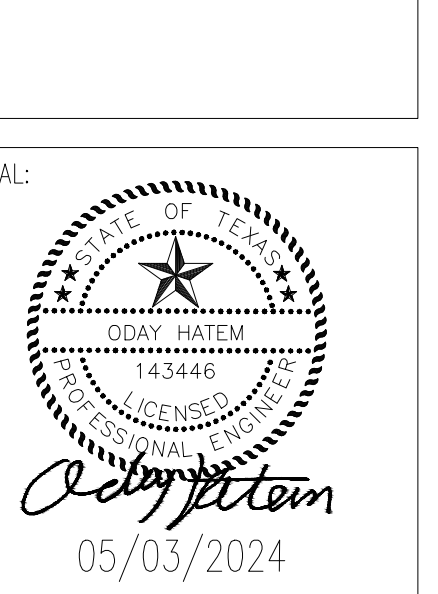
1 UNIT B5 - PLUMBING
1/4"=1'-0"



2 UNIT B6 - PLUMBING
1/4"=1'-0"



3 UNIT C1 - PLUMBING
1/4"=1'-0"



REVISIONS: _____ DATE: _____

TITLE:
ENLARGED PLUMBING LAYOUT PLAN

DATE: 04/26/2024	SCALE: 1/4"=1'-0"
DRAWN:	CHECKED:

PROJECT # _____
SHEET NO: **P3.04**