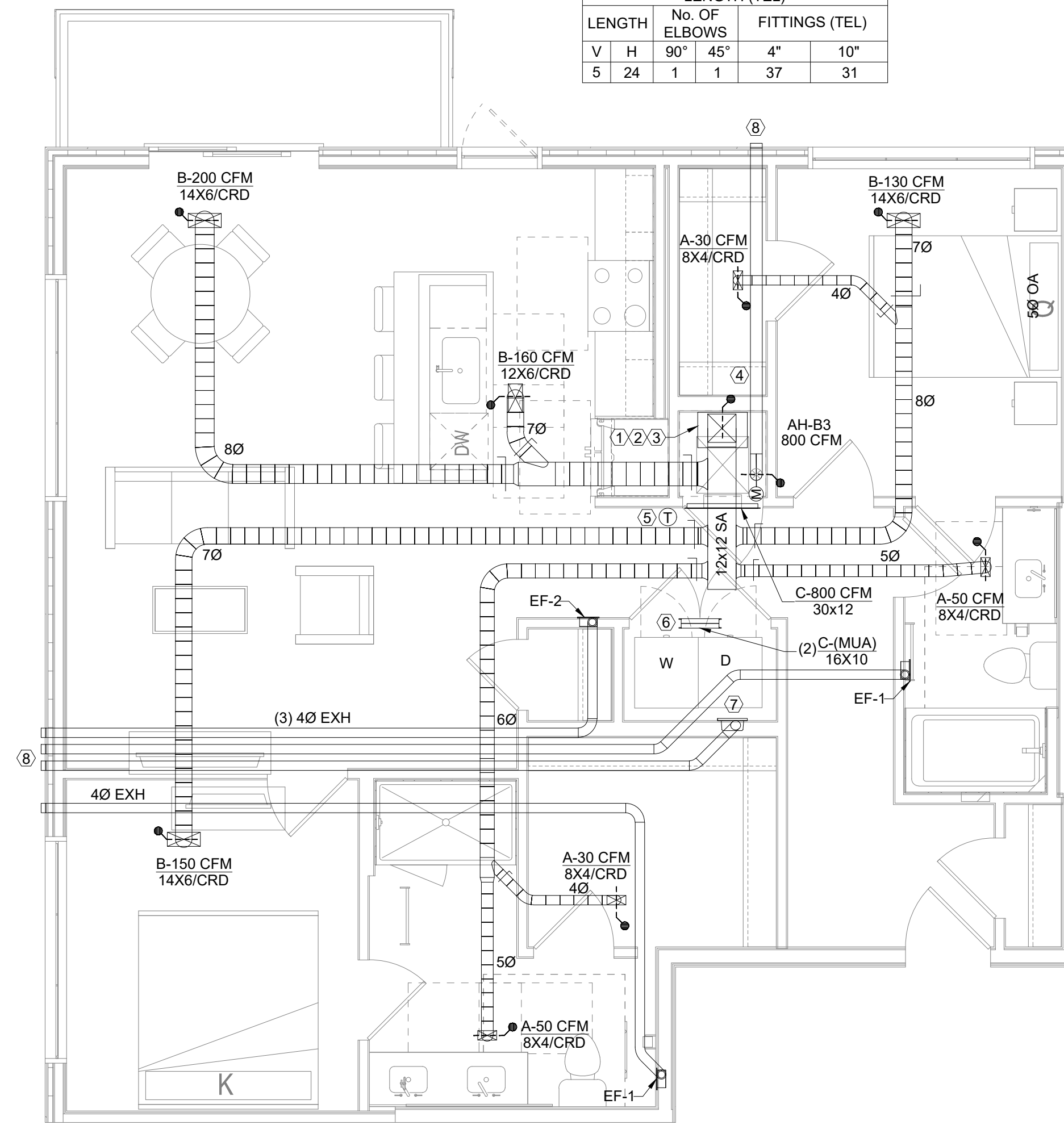
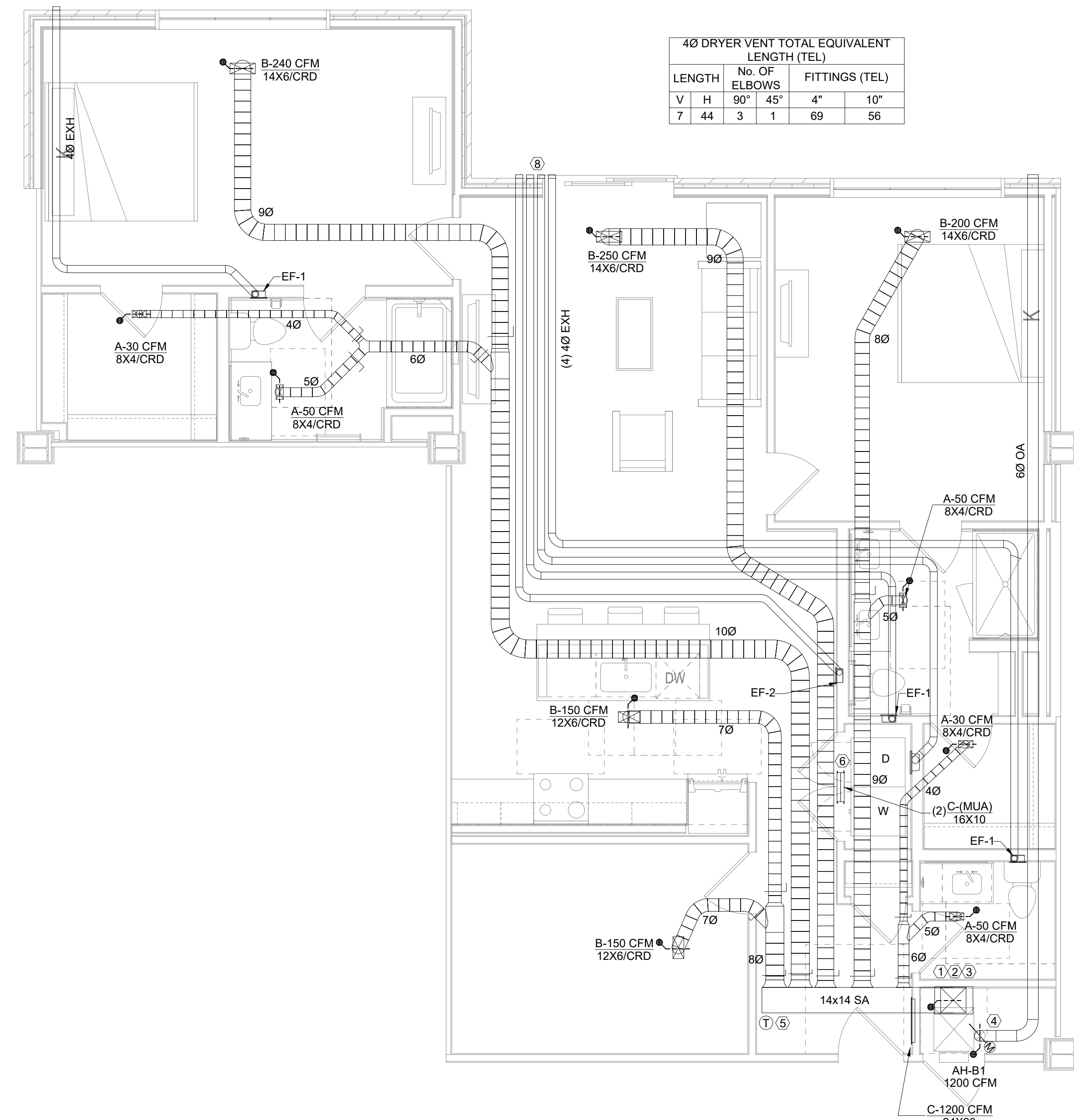


40 DRYER VENT TOTAL EQUIVALENT LENGTH (TEL)					
LENGTH		No. OF ELBOWS		FITTINGS (TEL)	
V	H	90°	45°	4"	10"
5	24	1	1	37	31



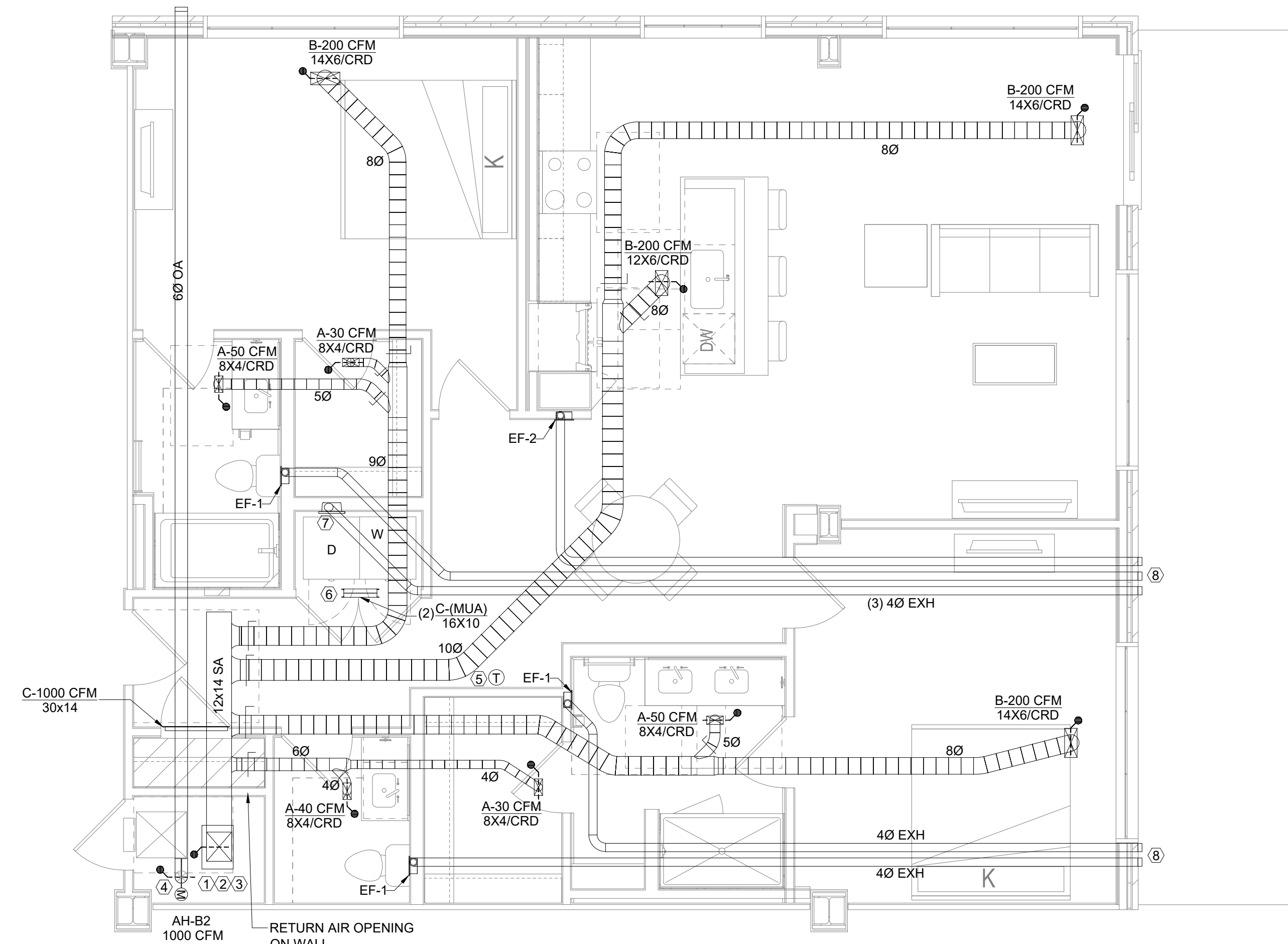
**3 UNIT B3 - MECHANICAL**  
1/4"=1'-0"

40 DRYER VENT TOTAL EQUIVALENT LENGTH (TEL)					
LENGTH		No. OF ELBOWS		FITTINGS (TEL)	
V	H	90°	45°	4"	10"
7	44	3	1	69	56



**1 UNIT B1 - MECHANICAL**  
1/4"=1'-0"

40 DRYER VENT TOTAL EQUIVALENT LENGTH (TEL)					
LENGTH		No. OF ELBOWS		FITTINGS (TEL)	
V	H	90°	45°	4"	10"
7	33	1	1	48	42



**2 UNIT B2 - MECHANICAL**  
1/4"=1'-0"

- KEYED NOTES:
- AIR HANDLER UNIT (V/TAC) REFER TO SCHEDULE ON SHEET M5.01 AND DETAILS ON SHEET M5.03 FOR ADDITIONAL INFORMATION.
  - OFFSET TRANSITION AND CONNECT SUPPLY/RETURN DUCT TO AHU OPENING WITH FLEXIBLE CONNECTION.
  - 3/4" CONDENSATE DRAIN DOWN TO FLOOR DRAIN WITH AIR GAP. (TYPICAL)
  - 5"Ø OUTDOOR AIR DUCT THRU WALL WITH MOTORIZED DAMPER. (TYP)
  - THERMOSTAT ARE MOUNTED AT 54 INCH ABOVE FINISH FLOOR. REFER TO ARCHITECTURAL PLANS FOR EXACT LOCATION.
  - LAUNDRY DRYER MAKEUP AIR THROUGH LOUVERED DOOR OR DOOR UNDERCUT TO ALLOW 100 SQUARE INCHES FREE AREA PER CODE. COORDINATE WITH ARCHITECT. (TYPICAL).
  - 4"Ø DRYER EXHAUST DUCT DOWN TO DRYER WALL BOX
  - WALL CAP WITH INTEGRAL BACKDRAFT DAMPER (TYPICAL)

CONSULTANT:  
**WAHEED CONSULTING**  
MECHANICAL-ELECTRICAL-PLUMBING SYSTEM DESIGNS  
Registration No. F-6336  
TEL: (817) 793 2010, FAX: (972) 442 4063  
420 PARKSIDE ST. MURPHY, TX, 75094  
E-mail: waheedmep@yahoo.com

**ART HOUSE**  
313 NORTH BECKLEY AVE,  
DALLAS, TEXAS

PROJECT:



REVISIONS: DATE:

TITLE:  
**ENLARGED APARTMENT  
UNIT B1, B2 AND B3**

DATE: 04/26/2024 SCALE: 1/4"=1'-0"

DRAWN: O.H. CHECKED: O.H.

PROJECT #

SHEET NO: **M3.03**