

2 UNIT S1 - ELECTRICAL
1/4"=1'-0"

LEGEND

H	FAN WITH LIGHT	⊖	RECEPTACLE, 120V SINGLE,
K	LED CEILING MOUNTED FIXTURE	⊖	RECEPTACLE, 120V DUPLEX
E1	FLUSH LENS LED FIXTURE	⊖	RECEPTACLE, 120V DUPLEX (ABOVE COUNTER)
T6	CEILING MOUNTED DECORATIVE LED	⊖	RECEPTACLE, 120V DUPLEX WEATHER PROOF
B1	BATHROOM VANITY LIGHT	⊖	RECEPTACLE, 120V DUPLEX WEATHER PROOF
⊖	EXHAUST FAN	⊖	GROUND FAULT INTERRUPTER 120V DUPLEX
⊖	CARBON MONOXIDE DETECTOR	⊖	50A, 208V RANGE OUTLET
⊖	120V SMOKE ALARM	⊖	RECEPTACLE, GFI ABOVE CEILING
⊖	TELEPHONE OUTLET	S	SINGLE SWITCH
⊖	DATA PORT	S ₃	3-WAY SWITCH
⊖	TELEVISION OUTLET	S _{F/L}	FAN LIGHT SWITCH
⊖	DISCONNECT SWITCH, NON-FUSED	S _F	PADDLE FAN SWITCH
⊖	DISCONNECT SWITCH, FUSED	1A-2	CIRCUIT HOMERUN TO PANEL 1A CKT. 2
⊖	JUNCTION BOX		
⊖	RECEPTACLE, 208V SINGLE, SEE SCHEDULE FOR AMP RATING		NOTE: LOWER SUBSCRIPT BESIDE FIXTURE DENOTES SWITCH GROUP

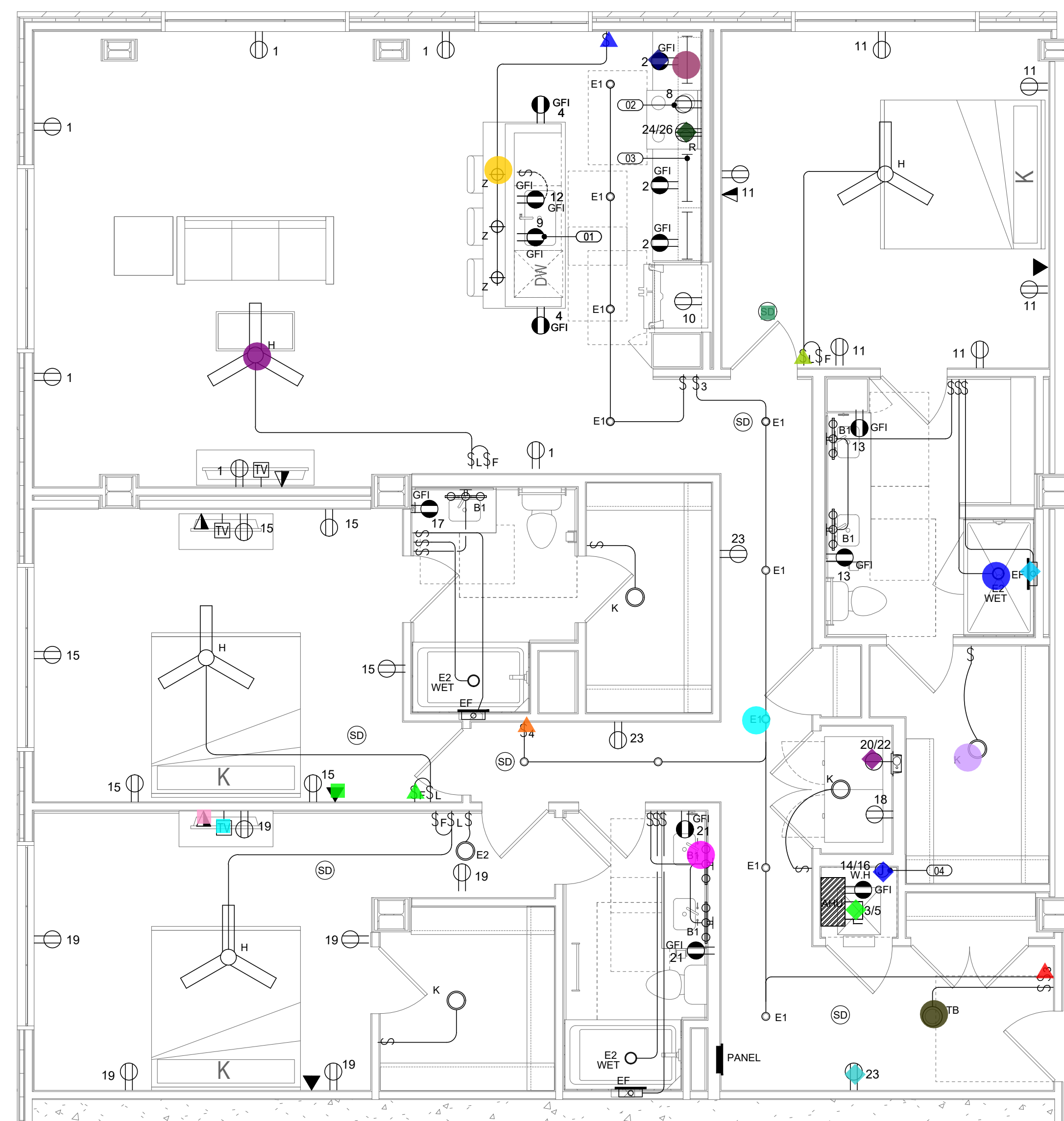
KEYED NOTES:

- 01) DISHWASHER RECEPTACLE SHALL BE LOCATED UNDER THE SINK.
- 02) MICROWAVE RECEPTACLE. COORDINATE WITH ARCHITECTURAL DRAWINGS FOR EXACT HEIGHT.
- 03) UNDER COUNTER LIGHTS (TYP).
- 04) J-BOX FOR WATER HEATER. COORDINATE EXACT LOCATION WITH MECH - PLUMB. DRAWINGS.

NOTES:

1. ELECTRICAL WORK SHALL BE PER NEC 2020 AND CITY OF DALLAS ELEC. ORDINANCE.
2. ELECTRICAL CONTRACTOR IS RESPONSIBLE TO MAINTAIN ALL RECEPTACLE SPACING AND REQUIREMENTS ACCORDING TO ARTICLE 210 OF THE NATIONAL ELECTRICAL CODE. THE NATIONAL ELECTRICAL CODE TAKES PRECEDENCE OVER THESE DRAWINGS FOR ALL RECEPTACLE REQUIREMENTS AND SPACING.
3. KITCHEN OVEN/RANGE AND ANY ELECTRIC DRYER SHALL BE SUPPLIED BY A 4-WIRE RECEPTACLE AND CONNECTED TO THE BRANCH CIRCUIT EQUIPMENT GROUND CONDUCTOR PER NEC ARTICLE 250.140
 - a. OVEN BRANCH CIRCUIT SHALL BE MINIMUM 3#6, #10G, 1°C FOR 50A (OR 3#8, #10G, 1°C FOR 40A) COPPER.
 - b. DRYER BRANCH CIRCUIT SHALL BE MINIMUM 3#10, #10G, 3/4°C COPPER.
4. FIELD VERIFY FINAL LOCATION AND REQUIREMENTS OF HVAC EQUIPMENT WITH PROVIDER.
5. ALL 125-VOLT 15 AND 20 AMPERE RECEPTACLES SHALL BE LISTED TAMPER-RESISTANT RECEPTACLES IN ACCORDANCE WITH NEC 406.12. ALL BRANCH CIRCUITS (INCLUDING OUTLET, LIGHTING AND SMOKE DETECTORS) SHALL BE PROTECTED BY A LISTED ARC-FAULT CIRCUIT INTERRUPTER, COMBINATION TYPE PER NEC 210.12.
6. ALL RECEPTACLES IN BATHROOMS, GARAGES, OUTDOORS, CRAWL SPACES, UNFINISHED BASEMENTS, LAUNDRY, KITCHENS, AND WITHIN 6 FEET OF UTILITY AND WET BAR SINKS SHALL BE GFCI PER NEC 210.8(A). THE E.C. SHALL PROVIDE GFCI OUTLETS IN ALL LOCATIONS REQUIRED BY THE NEC. ALL GFCI DEVICES SHALL REMAIN READILY ACCESSIBLE.
7. PROVIDE SEPARATE DEDICATED CIRCUITS FOR BATHROOM RECEPTACLE OUTLETS IN ACCORDANCE WITH NEC 210.11(C)(3).
8. FIXTURES IN CLOTHES CLOSET SHALL COMPLY WITH NEC 410.16 REGARDING DISTANCES FROM STORAGE AREAS AND TYPE OF FIXTURE. ALL LAMPS SHALL BE ENCLOSED.
9. LIGHTING WITHIN DWELLING UNITS SHALL HAVE 75 PERCENT OR MORE OF THE PERMANENTLY INSTALLED INTERIOR LIGHT FIXTURES FITTED WITH HIGH EFFICACY LAMPS.
10. CEILING FAN BOXES- PROVIDE JUNCTION BOX RATED FOR STRUCTURAL SUPPORT AND USE WITH CEILING FAN. PROVIDE WIRING FOR SEPARATE WALL BOX CONTROL OF FAN SPEED AND LIGHT KIT. FIELD VERIFY REQUIREMENTS WITH OWNER PRIOR TO ANY WORK.
11. SWITCHBANK LOCATIONS- PROVIDE SWITCHBANK WITH ALL SWITCHES GANGED TOGETHER WITH SINGLE COVERPLATE. FIELD VERIFY FINAL LOCATION OF SWITCHES WITH OWNER BEFORE STARTING ANY WORK.
12. COMMUNICATION SYSTEMS- PROVIDE COMPLETE COMMUNICATIONS SYSTEMS WIRING AND DEVICES AS REQUIRED FOR TELEPHONE, DATA, INTERNET, SATV, CATV SERVICES.
 - a. FIELD VERIFY FINAL QUANTITY, LOCATION, AND REQUIREMENTS OF ALL TELEPHONE, DATA, INTERNET AND TV DEVICES JACKS AND OUTLETS WITH OWNER.
 - b. COMMUNICATION BOX- FOR EACH UNIT IN THE WALK-IN CLOSET PROVIDE 12"x14"x4" FLUSH MOUNTED WALL BOX FOR ALL COMMUNICATION CABLES (TELEPHONE, DATA, INTERNET, SATV, CATV) AS REQUIRED TO ACCOMMODATE SEPARATE SERVICES FROM EACH PROVIDER. PROVIDE A PHONE TERMINAL BOX AND COAX SPLITTER TO ACCOMMODATE THE NUMBER OF PHONE/DATA AND TV DEVICES PLUS ONE SPARE FOR EACH. PROVIDE A DEDICATED CIRCUIT AND 4-PLEX OUTLET INSIDE BOX.
 - c. IF COMPLETE COMMUNICATION SERVICES ARE NOT FULLY INSTALLED DURING CONSTRUCTION, PROVIDE RACEWAY OR COORDINATE WITH G.C. SUCH THAT SERVICE PROVIDER CABLES MAY BE INSTALLED AFTER CONSTRUCTION IS COMPLETE.
13. ELECTRICAL CONTRACTOR TO COORDINATE WITH THE GENERAL CONTRACTOR TO ASSURE THAT THE WALL THICKNESS WILL ACCOMMODATE THE FLUSH MOUNTED LOAD CENTER. VERIFY EXACT LOCATION OF LOAD CENTER FROM ARCHITECTURAL DRAWINGS.
14. ELECTRICAL CONTRACTOR TO PROVIDE POWER REQUIREMENTS FOR ALL MECHANICAL EQUIPMENT; (SEE MECH DRAWINGS). THE ELECTRICAL CONTRACTOR SHALL COOPERATE WITH THE MECHANICAL CONTRACTOR SO THAT NO PIPING, DUCTS, OR EQUIPMENT FOREIGN TO THE OPERATION OF THE ELECTRICAL EQUIPMENT SHALL BE PERMITTED TO BE INSTALLED IN, ENTER OR PASS THROUGH, ABOVE OR BELOW, ANY ELECTRICAL SPACES.
15. SMOKE DETECTOR(S) TO BE INTERCONNECTED AS PER NFPA 72. PROVIDE AND INSTALL A VISUAL ALARM NOTIFICATION ASSIST BATTERY BACKED SMOKE DETECTOR IN ALL ADA ROOMS AS REQUIRED BY THE NATIONAL ELECTRICAL CODE. ALL ADA DWELLING UNITS SHALL BE PROVIDED WITH THE CAPABILITY TO SUPPORT VISUAL ALARM NOTIFICATION APPLIANCE AS PER IBC REQUIREMENTS.
16. CARBON MONOXIDE ALARM SHALL BE MOUNTED AT ALL GAS APPLIANCE LOCATIONS AND IN ALL SLEEPING UNITS PER IBC CODE. CARBON MONOXIDE ALARM SHALL BE MOUNTED AT 18" AFF OR PER IBC REQUIREMENTS AND SHALL BE INTERCONNECTED TO PROVIDE A COMMON ALARM ON ACTIVATION.
17. ALL WALL PENETRATIONS SHALL BE CAULKED WITH APPROVED MATERIAL TO MAINTAIN THE FIRE RATING OF ALL WALLS AND FLOORS. RECEPTACLES ON BOXES IN RATED WALL MUST BE INSTALLED WITH FIRES TOPPING SEALANT AROUND BOXES. DO NOT INSTALL BOXES ON OPPOSITE SIDES OF RATED WALL CLOSER THAN 24". OBTAIN APPROVAL FROM ELECTRICAL INSPECTOR FOR THE USE OF METACALK PUTTY PADS OR SHEETROCK IN STUD CAVITY TO INSTALL WITH LESS THAN 24" MINIMUM HORIZONTAL DISTANCE.
18. UNDER COUNTER LIGHT CONNECT TO NEAREST ABOVE COUNTER RECEPTACLE, SWITCHED THROUGH A HALF SWITCHED GFCI RECEPTACLE.

FIRE DEVICES SHOWN ON CONSTRUCTION PLANS ARE FOR INFORMATIONAL PURPOSES ONLY. ALL FIRE ALARM AND FIRE SPRINKLER DESIGNS NEED TO BE SUBMITTED SEPARATELY BY A LICENSED DESIGN ENGINEER AND APPROVED BY THE CITY'S FIRE DEPARTMENT PRIOR TO CONSTRUCTION.



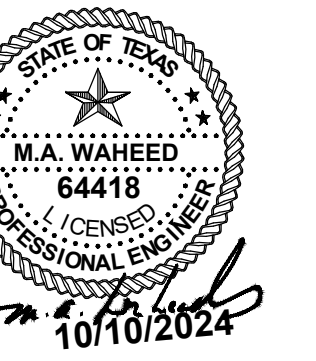
1 UNIT C1 - ELECTRICAL
1/4"=1'-0"

CONSULTANT:
WAHEED CONSULTING
MECHANICAL-ELECTRICAL-PLUMBING SYSTEM DESIGNS
Registration No. F-6336
TEL: (972) 783 2010, FAX: (972) 441 4863
420 PARKSIDE ST. MURPHY, TX, 75094
E-mail: waheednep@yahoo.com

ART HOUSE
313 NORTH BECKLEY AVE,
DALLAS, TEXAS

PROJECT:

SEAL:



REVISIONS: DATE:
REV 1: OWNER ADDITION 05/03/24

ENLARGED
UNIT PLANS
ELECTRICAL

TITLE:

DATE: 04/30/2024 SCALE:
DRAWN: CHECKED:

PROJECT #

SHEET NO:
E4.05