

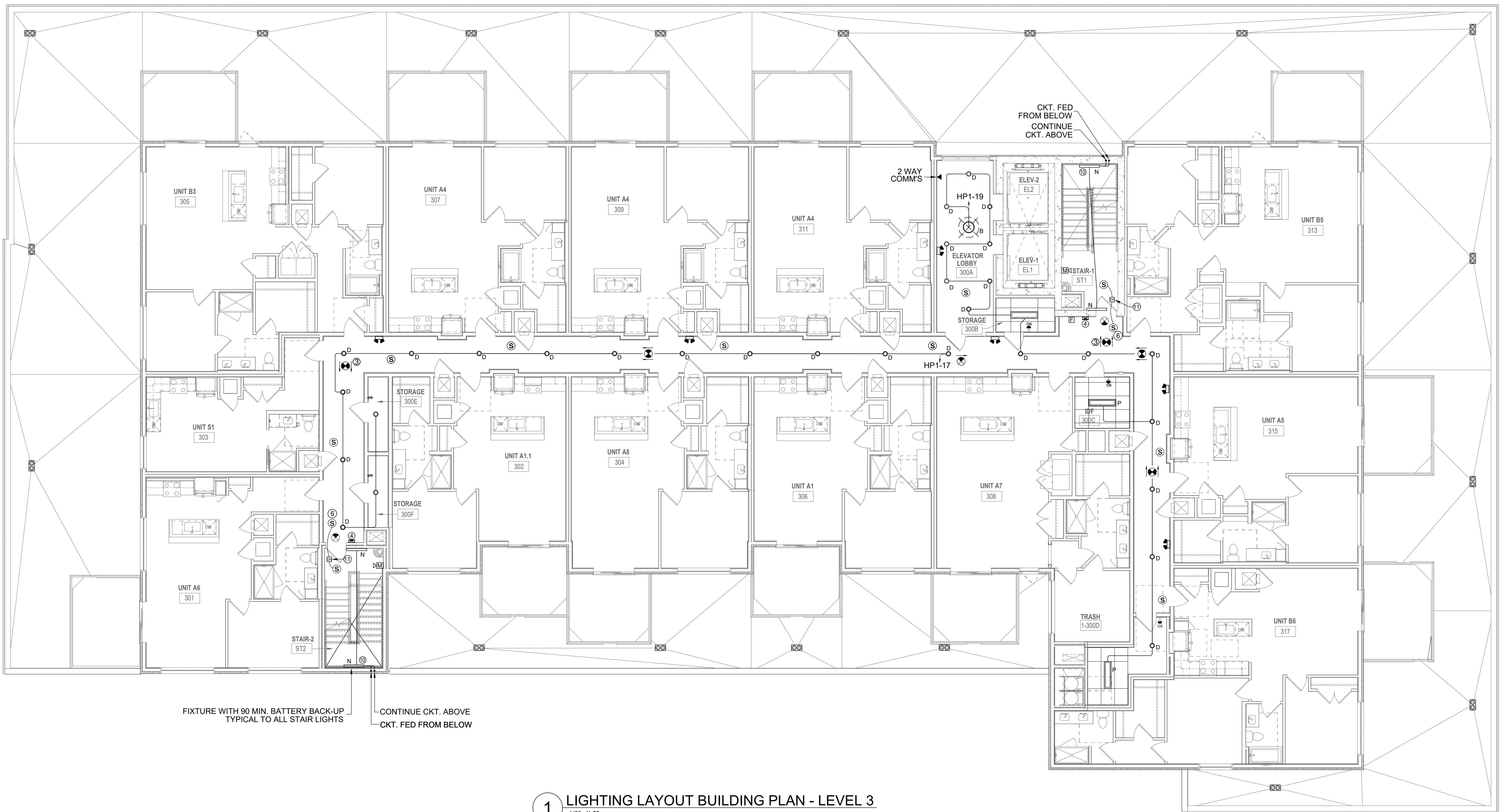
- KEY NOTES:**
- CONNECT ALL CORRIDOR LIGHTS, EXIT LIGHTS AND EXTERIOR ABOVE DOOR LIGHTS TO EMERGENCY PANEL HP-1, UNLESS OTHERWISE NOTED.
  - CIRCUIT TO BE CONTROLLED BY A PHOTOCELL WITH TIMER AND OVERRIDE SWITCH. TIMER SWITCH SHALL BE CAPABLE OF RETAINING PROGRAMMING AND THE TIME SETTING DURING LOSS OF POWER FOR A PERIOD OF AT LEAST 10 HOURS. MOUNT OUTDOOR PHOTOCELL HORIZONTALLY ON ROOF OR EQUAL, FACING NORTHERN SKY. HOODED PORTION ON TOP, POINTED AWAY FROM ANY NIGHTTIME LIGHT SOURCES.
  - FIXTURE SHALL BE PROVIDED WITH BATTERY BACK-UP FOR 90 MINUTE OPERATION UPON LOSS OF POWER. CIRCUIT SERVING THESE LIGHT FIXTURES SHALL BE CONTROLLED BY A PHOTOCELL. MOUNT OUTDOOR PHOTOCELL HORIZONTALLY ON ROOF OR EQUAL, FACING NORTHERN SKY. HOODED PORTION ON TOP, POINTED AWAY FROM ANY NIGHTTIME LIGHT SOURCES.
  - INTERNALLY ILLUMINATED SELF LUMINOUS, FLOOR LEVEL EXIT SIGN.
  - EXTERIOR LIGHTS MUST BE CONTROLLED BY AN ASTRONOMICAL TIME SWITCH OR A COMBINATION OF A PHOTO SENSOR AND A TIME SWITCH CONTROL. ALL TIME SWITCHES SHALL BE CAPABLE OF RETAINING PROGRAMMING AND THE TIME DURING LOSS OF POWER FOR A PERIOD OF AT LEAST 10 HOURS. ASTRONOMICAL TIME SWITCH OR PHOTO SENSOR CONTROL IS REQUIRED FOR LIGHTING DESIGNATED FOR DUSK-TO-DAWN OPERATION.
  - DOOR SHALL BE AUTOMATIC CLOSING BY THE ACTUATION OF SMOKE DETECTORS OR BY LOSS OF POWER TO THE SMOKE DETECTOR OR HOLD-OPEN DEVICE. DOORS THAT ARE AUTOMATIC CLOSING BY SMOKE DETECTION SHALL NOT HAVE MORE THAN A 10-SECOND DELAY BEFORE THE DOOR STARTS TO CLOSE AFTER THE SMOKE DETECTOR IS ACTUATED. PER IBC 708.7.4.1.5.4.8.3.
  - AN OCCUPANT SENSOR OR A TIMER SWITCH SHALL BE INSTALLED THAT AUTOMATICALLY TURNS LIGHTING OFF WITHIN 30 MINUTES OF ALL OCCUPANTS LEAVING A SPACE IN:
    - CLASSROOMS
    - CONFERENCE, MEETING, AND TRAINING ROOMS,
    - EMPLOYEE LUNCH AND BREAK ROOMS,
    - STORAGE/JANITORIAL ROOMS
    - RESTROOMS
    - OFFICE SPACES
    - SPACES LESS THAN OR EQUAL TO 300 FT<sup>2</sup>
    - AUTOMATIC-ON SENSORS SET POWER ON TO LESS THAN 50 PERCENT POWER.
  - EXIT SIGNAGE MUST COMPLY WITH NFPA 101, INCLUDING EXTERIOR ASSEMBLY OCCUPANCIES AND EXIT DISCHARGE PATHS.
  - PROVIDE ACCESSIBLE 3/4" CONDUIT STUB OUTS WITH PULL WIRE FOR FUTURE CIRCUIT CONNECTION BY TENANT.
  - PROVIDE FIXTURE WITH INTEGRAL BATTERY FOR EMERGENCY LIGHTING. MINIMUM 90 MINUTES ILLUMINATION.
  - DOOR TO RECEIVE MAGNETIC HOLD OPEN DEVICE TIED TO FIRE ALARM SYSTEM.
  - LIGHTS IN ELEVATOR LOBBY SHOULD BE SURFACE-MOUNTED WITH EXPOSED ELECTRICAL CONDUIT DUE TO COMPOSITE FLOOR DECK.

**LEGEND**

|  |   |
|--|---|
| ☒ EXHAUST FAN  | ⏏ RECEPTACLE, 120V DUPLEX (ABOVE COUNTER)                 |
| Ⓢ CARBON MONOXIDE DETECTOR                                 | ⏏ WP RECEPTACLE, 120V DUPLEX WEATHER PROOF                |
| Ⓢ 120V SMOKE ALARM   | ⏏ GF1 GROUND FAULT INTERRUPTER 120V DUPLEX                |
| Ⓢ MAGNETIC HOLD-OPEN DEVICE ACTIVATED BY FIRE ALARM SYSTEM | ⏏ R 50A, 208V RANGE OUTLET                                |
| ☒ TELEPHONE OUTLET   | ⏏ GF1 RECEPTACLE, GFI ABOVE CEILING                       |
| ☒ DATA PORT  | Ⓢ SINGLE SWITCH   |
| ☒ TELEVISION OUTLET  | Ⓢ3 3-WAY SWITCH   |
| ☒ DISCONNECT SWITCH, NON-FUSED                             | Ⓢ FIL FAN LIGHT SWITCH                                    |
| ☒ DISCONNECT SWITCH, FUSED                                 | Ⓢ F PADDLE FAN SWITCH                                     |
| ☒ JUNCTION BOX   | 1A-2 CIRCUIT HOMERUN TO PANEL 1A CKT. 2                   |
| ⏏ RECEPTACLE, 208V SINGLE. SEE SCHEDULE FOR AMP RATING     | NOTE: LOWER SUBSCRIPT BESIDE FIXTURE DENOTES SWITCH GROUP |
| ⏏ RECEPTACLE, 120V SINGLE                                  |   |
| ⏏ RECEPTACLE, 120V DUPLEX                                  |   |

FIRE DEVICES SHOWN ON CONSTRUCTION PLANS ARE FOR INFORMATIONAL PURPOSES ONLY. ALL FIRE ALARM AND FIRE SPRINKLER DESIGNS NEED TO BE SUBMITTED SEPARATELY BY A LICENSED DESIGN ENGINEER AND APPROVED BY THE CITY'S FIRE DEPARTMENT PRIOR TO CONSTRUCTION.

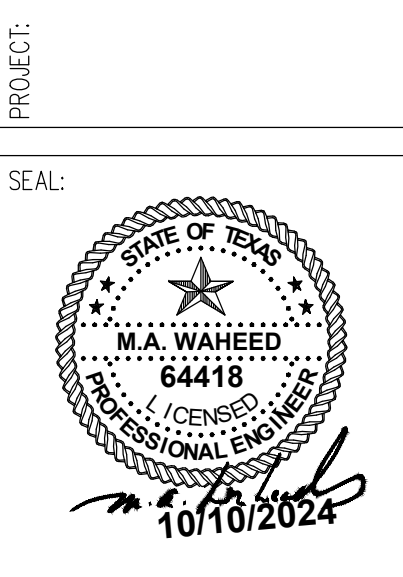
SEE SHEET E4.01, E4.02, E4.03, E4.04, E4.05 & E4.06 FOR APARTMENT ELECTRICAL LAYOUT



1 LIGHTING LAYOUT BUILDING PLAN - LEVEL 3  
1/8"=1'-0"

CONSULTANT:  
**WAHEED CONSULTING**  
MECHANICAL-ELECTRICAL-PLUMBING SYSTEM DESIGN  
Registration No. F-6336  
TEL: (972) 783 2010, FAX: (972) 441 4963  
420 PARKSIDE ST. MURPHY, TX, 75094  
E-mail: waheedmep@yahoo.com

**ART HOUSE**  
313 NORTH BECKLEY AVE,  
DALLAS, TEXAS



REVISIONS: DATE:

|  |  |
|--|--|
|  |  |
|  |  |
|  |  |

TITLE:  
LIGHTING LAYOUT  
BUILDING PLAN -  
LEVEL 3

|                     |              |
|---------------------|--------------|
| DATE:<br>04/30/2024 | SCALE:       |
| DRAWN:              | CHECKED:     |
| PROJECT #           |              |
| SHEET NO:           | <b>E2.04</b> |