

KEY NOTES:

- ① CONNECT ALL CORRIDOR LIGHTS, EXIT LIGHTS AND EXTERIOR ABOVE DOOR LIGHTS TO EMERGENCY PANEL HP-1, UNLESS OTHERWISE NOTED.
- ② CIRCUIT TO BE CONTROLLED BY A PHOTOCELL WITH TIMER AND OVERRIDE SWITCH. TIMER SWITCH SHALL BE CAPABLE OF RETAINING PROGRAMMING AND THE TIME SETTING DURING LOSS OF POWER FOR A PERIOD OF AT LEAST 10 HOURS. MOUNT OUTDOOR PHOTOCELL HORIZONTALLY ON ROOF OR EQUAL, FACING NORTHERN SKY. HOODED PORTION ON TOP, POINTED AWAY FROM ANY NIGHTTIME LIGHT SOURCES.
- ③ FIXTURE SHALL BE PROVIDED WITH BATTERY BACK-UP FOR 90 MINUTE OPERATION UPON LOSS OF POWER. CIRCUIT SERVING THESE LIGHT FIXTURES SHALL BE CONTROLLED BY A PHOTOCELL. MOUNT OUTDOOR PHOTOCELL HORIZONTALLY ON ROOF OR EQUAL, FACING NORTHERN SKY. HOODED PORTION ON TOP, POINTED AWAY FROM ANY NIGHTTIME LIGHT SOURCES.
- ④ INTERNALLY ILLUMINATED SELF LUMINOUS, FLOOR LEVEL EXIT SIGN.
- ⑤ EXTERIOR LIGHTS MUST BE CONTROLLED BY AN ASTRONOMICAL TIME SWITCH OR A COMBINATION OF A PHOTO SENSOR AND A TIME SWITCH CONTROL. ALL TIME SWITCHES SHALL BE CAPABLE OF RETAINING PROGRAMMING AND THE TIME DURING LOSS OF POWER FOR A PERIOD OF AT LEAST 10 HOURS. ASTRONOMICAL TIME SWITCH OR PHOTO SENSOR CONTROL IS REQUIRED FOR LIGHTING DESIGNATED FOR DUSK-TO-DAWN OPERATION.
- ⑥ DOOR SHALL BE AUTOMATIC CLOSING BY THE ACTUATION OF SMOKE DETECTORS OR BY LOSS OF POWER TO THE SMOKE DETECTOR OR HOLD-OPEN DEVICE. DOORS THAT ARE AUTOMATIC CLOSING BY SMOKE DETECTION SHALL NOT HAVE MORE THAN A 10-SECOND DELAY BEFORE THE DOOR STARTS TO CLOSE AFTER THE SMOKE DETECTOR IS ACTUATED. PER IBC 708.7.8.15.4.8.3.
- ⑦ AN OCCUPANT SENSOR OR A TIMER SWITCH SHALL BE INSTALLED THAT AUTOMATICALLY TURNS LIGHTING OFF WITHIN 30 MINUTES OF ALL OCCUPANTS LEAVING A SPACE IN:
 1. CLASSROOMS
 2. CONFERENCE, MEETING, AND TRAINING ROOMS,
 3. EMPLOYEE LUNCH AND BREAK ROOMS,
 4. STORAGE/JANITORIAL ROOMS
 5. RESTROOMS
 6. OFFICE SPACES
 7. SPACES LESS THAN OR EQUAL TO 300 FT2
 AUTOMATIC-ON SENSORS SET POWER ON TO LESS THAN 50 PERCENT POWER.
- ⑧ EXIT SIGNAGE MUST COMPLY WITH NFPA 101, INCLUDING EXTERIOR ASSEMBLY OCCUPANCIES AND EXIT DISCHARGE PATHS.
- ⑨ PROVIDE ACCESSIBLE 3/4" CONDUIT STUB OUTS WITH PULL WIRE FOR FUTURE CIRCUIT CONNECTION BY TENANT.
- ⑩ PROVIDE FIXTURE WITH INTEGRAL BATTERY FOR EMERGENCY LIGHTING.
- ⑪ DOOR TO RECEIVE MAGNETIC HOLD OPEN DEVICE TIED TO FIRE ALARM SYSTEM.
- ⑫ LIGHTS IN ELEVATOR LOBBY SHOULD BE SURFACE-MOUNTED WITH EXPOSED ELECTRICAL CONDUIT DUE TO COMPOSITE FLOOR DECK.

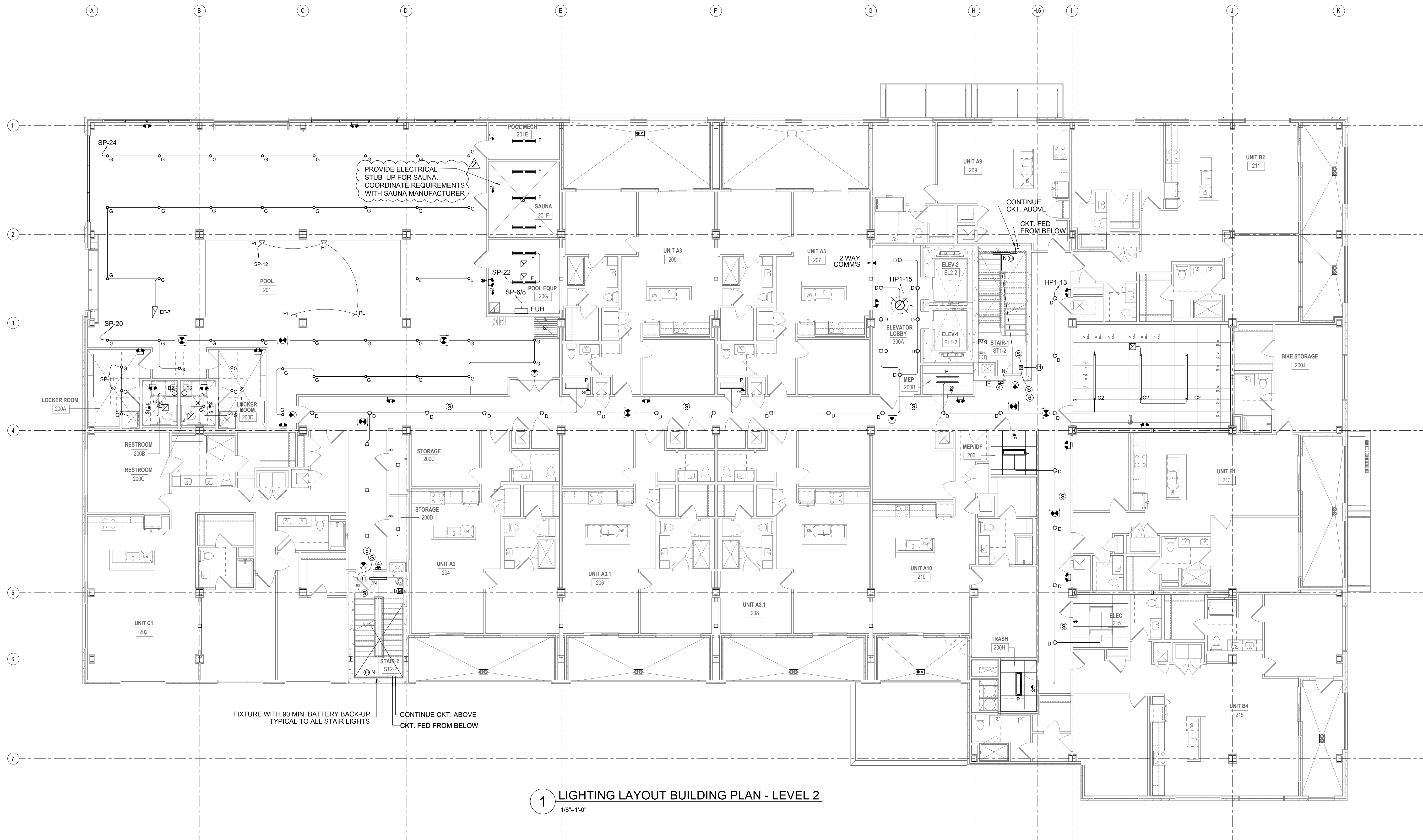
LEGEND

| | | | |
|---|--|------|---|
| ⊠ | EXHAUST FAN | ⊕ | RECEPTACLE, 120V DUPLEX (ABOVE COUNTER) |
| ⊙ | CARBON MONOXIDE DETECTOR | ⊕ WP | RECEPTACLE, 120V DUPLEX WEATHER PROOF |
| ⊙ | 120V SMOKE ALARM | ⊕ R | GROUND FAULT INTERRUPTER 120V DUPLEX |
| ⊙ | MAGNETIC HOLD-OPEN DEVICE ACTIVATED BY FIRE ALARM SYSTEM | ⊕ | 50A, 208V RANGE OUTLET |
| ⊙ | TELEPHONE OUTLET | ⊕ | RECEPTACLE, GFI ABOVE CEILING |
| ⊙ | DATA PORT | ⊕ | SINGLE SWITCH |
| ⊙ | TELEVISION OUTLET | ⊕ | 3-WAY SWITCH |
| ⊙ | DISCONNECT SWITCH, NON-FUSED | ⊕ | FAN LIGHT SWITCH |
| ⊙ | DISCONNECT SWITCH, FUSED | ⊕ | PADDLE FAN SWITCH |
| ⊙ | JUNCTION BOX | 1A-2 | CIRCUIT HOMERUN TO PANEL 1A CKT. 2 |
| ⊕ | RECEPTACLE, 208V SINGLE. SEE SCHEDULE FOR AMP RATING | | |
| ⊕ | RECEPTACLE, 120V SINGLE. | | |
| ⊕ | RECEPTACLE, 120V DUPLEX | | |

NOTE: LOWER SUBSCRIPT BESIDE FIXTURE DENOTES SWITCH GROUP

FIRE DEVICES SHOWN ON CONSTRUCTION PLANS ARE FOR INFORMATIONAL PURPOSES ONLY. ALL FIRE ALARM AND FIRE SPRINKLER DESIGNS NEED TO BE SUBMITTED SEPARATELY BY A LICENSED DESIGN ENGINEER AND APPROVED BY THE CITY'S FIRE DEPARTMENT PRIOR TO CONSTRUCTION.

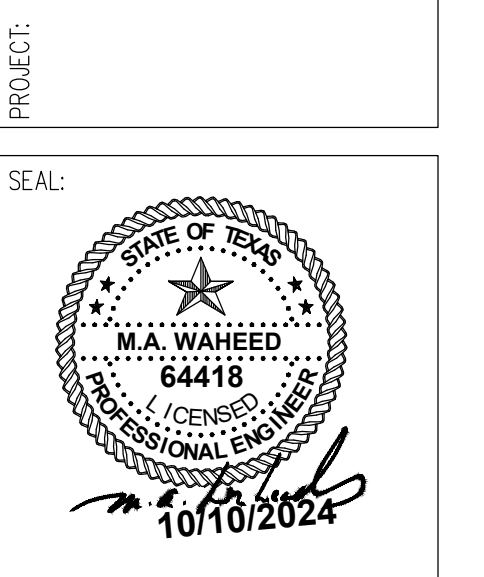
SEE SHEET E4.01, E4.02, E4.03, E4.04, E4.05 & E4.06 FOR APARTMENT ELECTRICAL LAYOUT



1 LIGHTING LAYOUT BUILDING PLAN - LEVEL 2
1/8"=1'-0"

CONSULTANT:
WAHEED CONSULTING
MECHANICAL-ELECTRICAL-PLUMBING SYSTEM DESIGNS
Registration No. F-6336
TEL: (972) 783-2010, FAX: (972) 443-4963
420 PARKSIDE ST. MURPHY, TX, 75094
E-mail: waheedmep@yahoo.com

ART HOUSE
313 NORTH BECKLEY AVE,
DALLAS, TEXAS



REVISIONS: DATE:
REV 2: OWNER CHANGES 10/10/24
REV 2: OWNER CHANGES 10/10/24

TITLE:
LIGHTING LAYOUT
BUILDING PLAN -
LEVEL 2

DATE: 04/30/2024 SCALE:
DRAWN: CHECKED:
PROJECT #
SHEET NO: **E2.03**