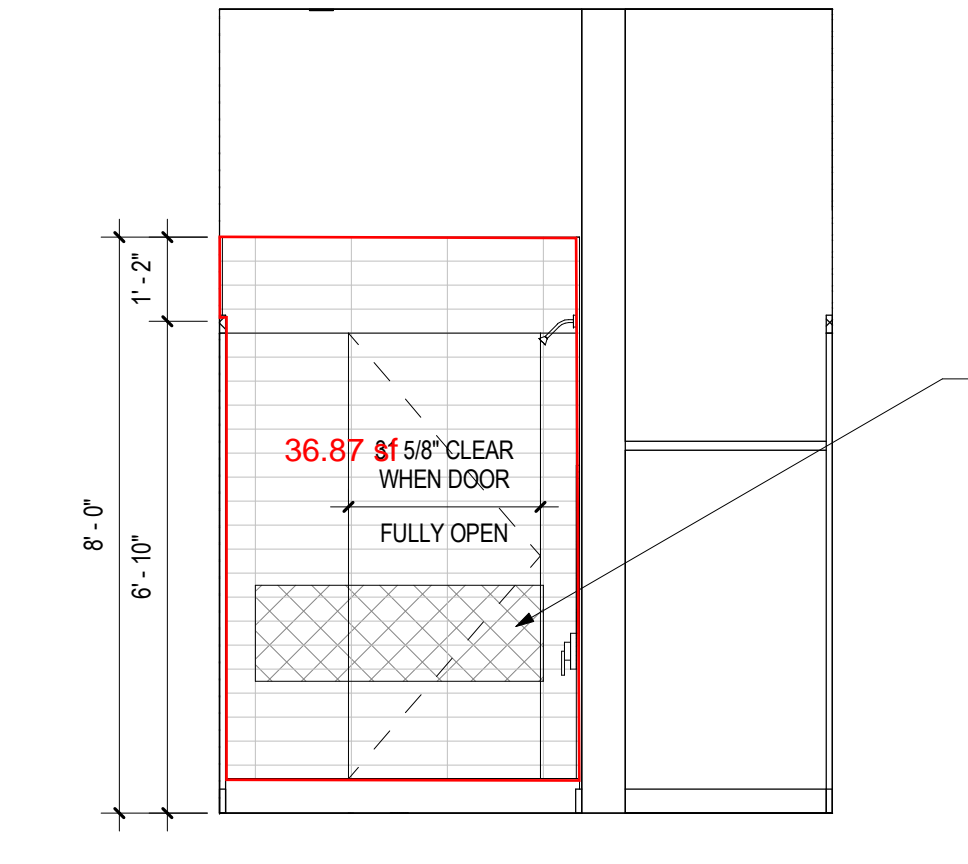
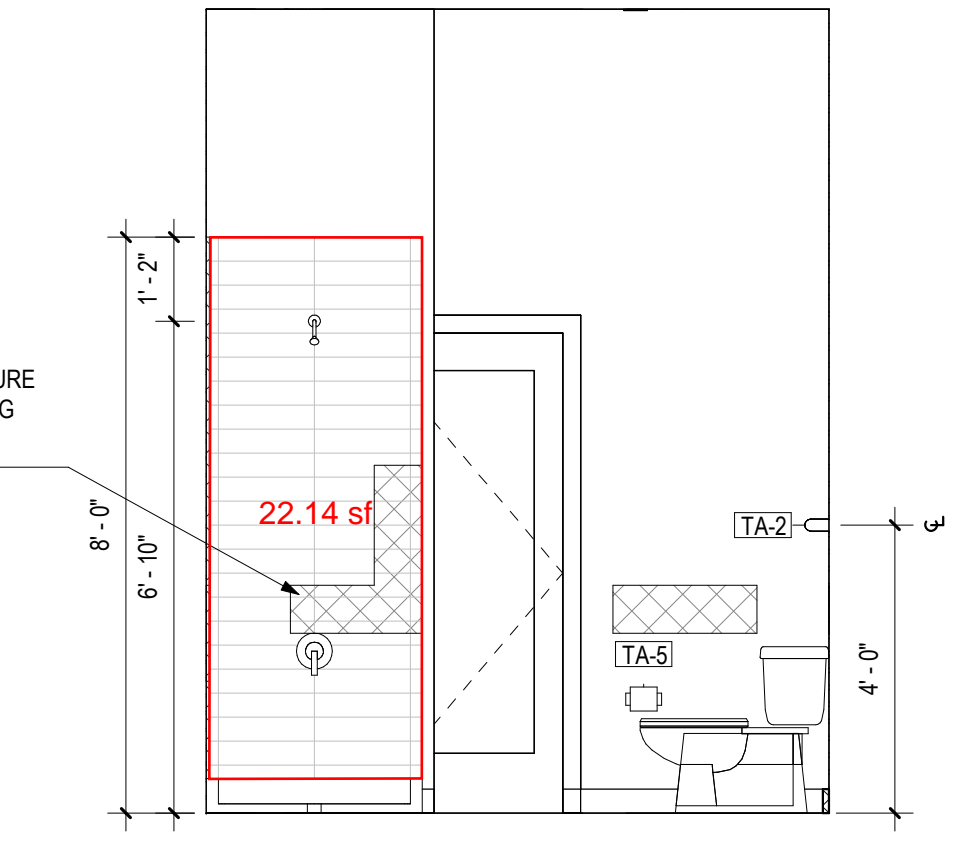


8 Unit B1 Bathroom 1 Elevation 4  
 Scale: 3/8" = 1'-0"

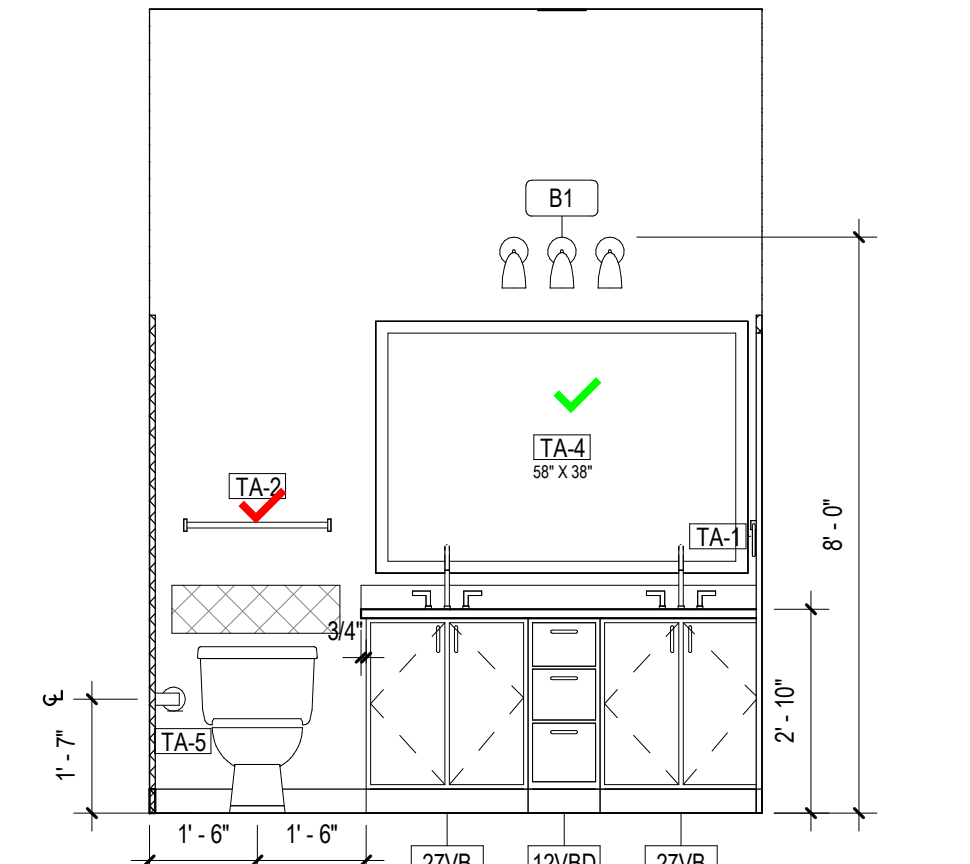


7 Unit B1 Bathroom 1 Elevation 3  
 Scale: 3/8" = 1'-0"

PROVIDE BLOCKING FOR FUTURE GRAB BARS PER FAIR HOUSING ACT GUIDELINES. REFERENCE SHEET G-201



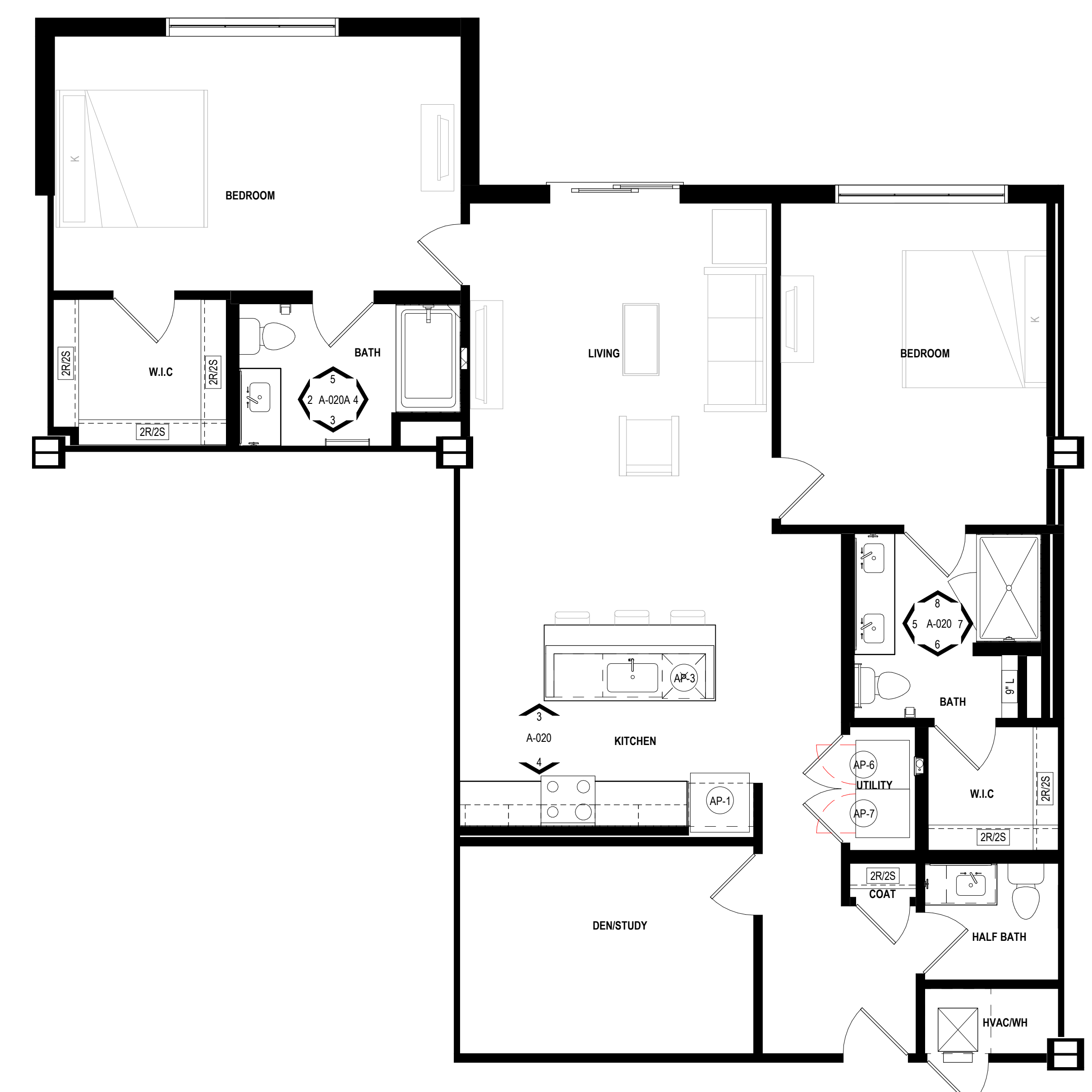
6 Unit B1 Bathroom 1 Elevation 2  
 Scale: 3/8" = 1'-0"



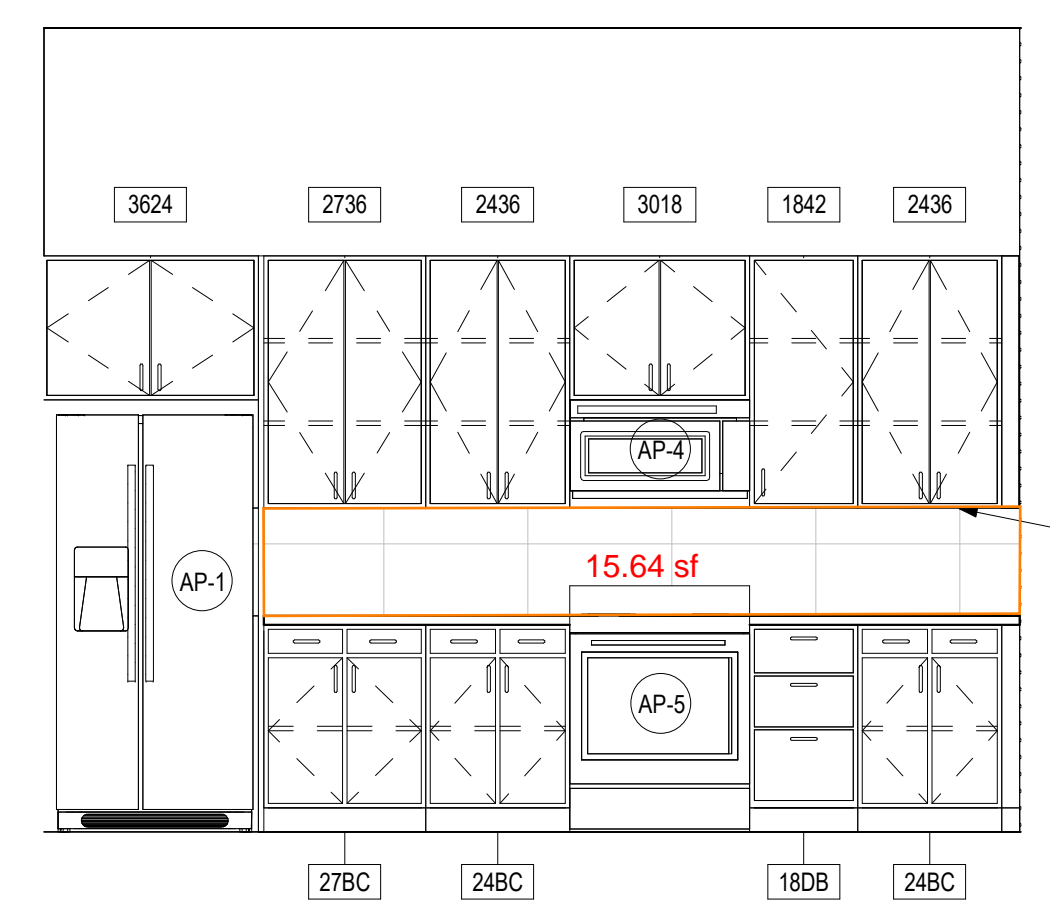
5 Unit B1 Bathroom 1 Elevation 1  
 Scale: 3/8" = 1'-0"

**Legend**

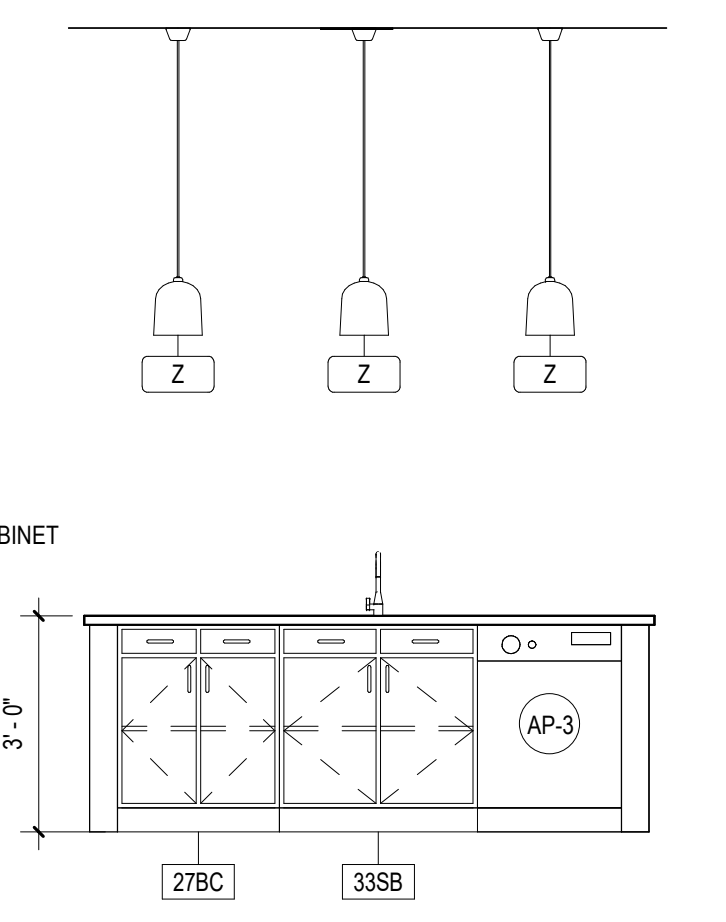
Description	Quantity	Unit
Bathroom Tile	81.14	sf
Kitchen Tile	15.64	sf



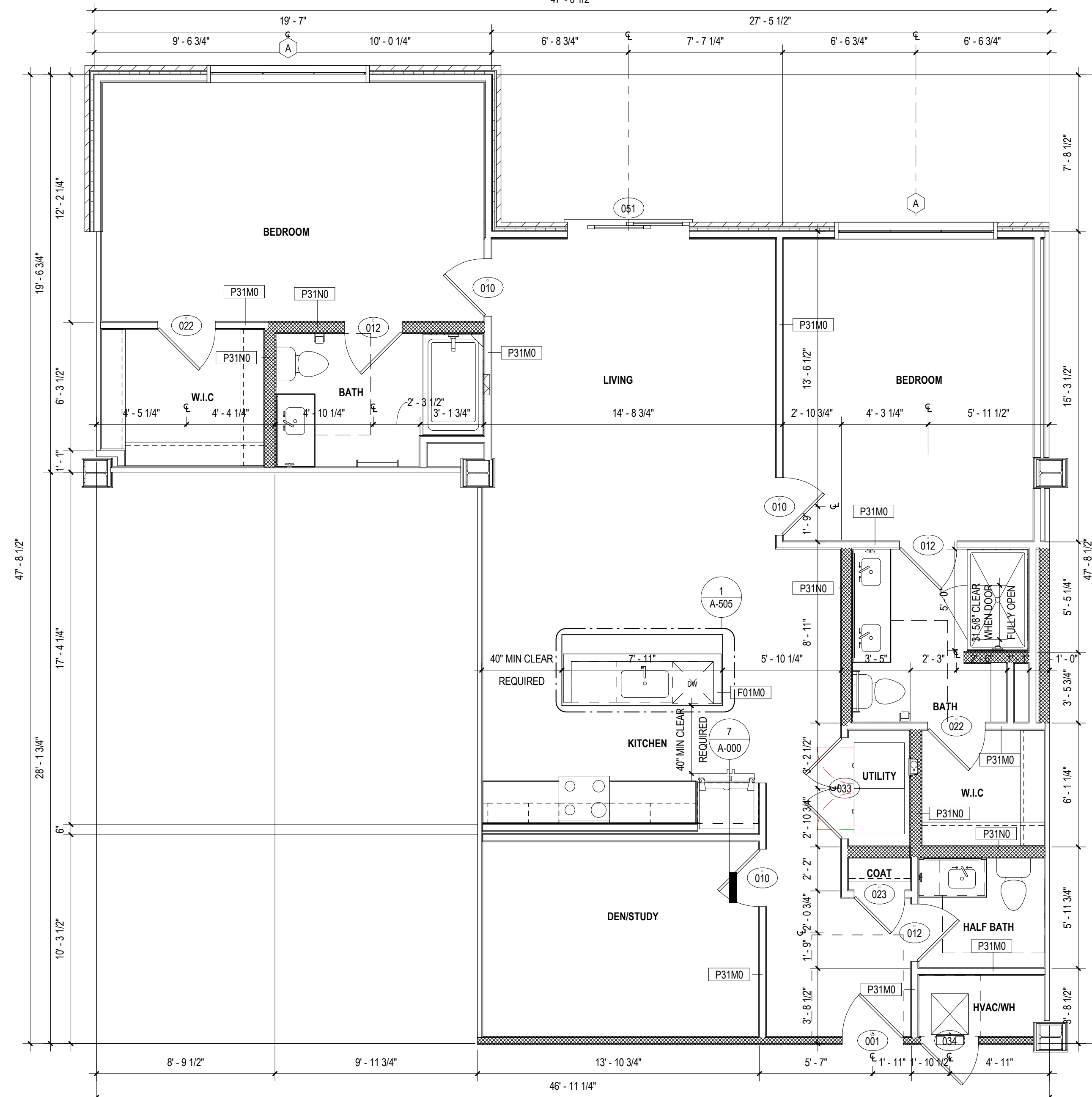
1 Unit B1 Finish Plan  
 Scale: 1/4" = 1'-0"



4 Unit B1 Kitchen Elevation 2  
 Scale: 3/8" = 1'-0"



3 Unit B1 Kitchen Elevation 1  
 Scale: 3/8" = 1'-0"



1 Unit B1 Plan  
 Scale: 1/4" = 1'-0"

**UNIT PLAN GENERAL NOTES**

- ALL DIMENSIONS ARE TO FACE OF STUD UNLESS OTHERWISE NOTED. (U.O.N.)
- PROVIDE BLOCKING FOR ALL WALL-MOUNTED ACCESSORIES AS REQUIRED.
- ALL ANGLES ARE 45 DEGREES TO THE HORIZONTAL AND VERTICAL U.O.N. TYPICAL ALL UNITS.
- INSULATION OCCURS IN ALL UNIT FLOOR/CEILING ASSEMBLIES. REFERENCE DETAILS FL01-FL02A-740
- REFER TO SHEETS G-201-G-203 FOR ACCESSIBILITY DESIGN STANDARDS.
- PROVIDE WATER LINE WITH SHUT OFF VALVE AT ALL REFRIGERATOR LOCATIONS FOR ICE MAKER.
- THRESHOLD AT DOORWAYS SHALL NOT EXCEED 1/2 INCH (13MM), INCLUDING BUT NOT LIMITED TO: ACCESSIBLE BUILDING ENTRIES, UNIT ENTRIES, AND ACCESSIBLE UNIT DOORS.
- UNIT EXTERIORS VARY. COORDINATE WITH BUILDING ELEVATIONS FOR SIZE AND LOCATION OF FENESTRATION AS WELL AS EXTERIOR CLADDING MATERIALS.
- SEE BUILDING PLANS FOR CORRIDOR AND DEMISING WALL TYPES.
- REFERENCE SHEET A-730 FOR WALL ASSEMBLIES. LEGEND PROVIDED BELOW FOR QUICK REFERENCE FOR STUD SIZE AND RATING.
- REFERENCE SHEET A-700 FOR DOOR SCHEDULE. UNIT DOORS ARE SCHEDULED BY TYPE (000 SERIES) AND BUILDING/ANCILLARY DOORS ARE SCHEDULED BY INSTANCE. ARCHITECTURAL DOOR SCHEDULE INDICATES STYLE, DIMENSIONS, RATING, AND HARDWARE TYPES. REFERENCE ID FOR ALL SPECIFICATIONS AND FINISHES AS WELL AS ANY SPECIALTY DOORS.
- INSTALL BLOCKING FOR FUTURE GRAB BAR MOUNTING IN ALL UNIT BATHROOMS IN ACCORDANCE WITH ANSI 2017 AND FAIR HOUSING ACCESSIBILITY DESIGN STANDARDS. REFERENCE G-201 FOR REQUIREMENTS.
- INTERIOR DOORS SHOWN IN THE CORNER OF A SPACE ARE ASSUMED TO BE 4 INCHES FROM THE CORNER WALL STUD AND NEED NOT BE DIMENSIONED U.O.N.
- FURR-DOWNS MAY BE CONSTRUCTED USING ANY MATERIALS PERMITTED BY THE CONSTRUCTION TYPE AS DEFINED BY IBC. HOWEVER MATERIALS EXPOSED TO AIR FLOW (EXAMPLE: RETURN AIR PLENUM) MUST BE NON-COMBUSTIBLE OR MEET THE 2550 FLAME SPREAD/SMOKE-DEVELOPED INDICES AS PER IBC 2015 SECTION 602.2.
- KITCHEN BASE CABINETS ARE 24" DEEP, AND BATHROOM BASE CABINETS ARE 21" DEEP U.O.N.
- INSULATE WALLS AT ALL PLUMBING RISERS.
- COORDINATE ALL FRAMING DIMENSIONS WITH THE FINAL FIXTURES SUPPLIED.
- FIBERGLASS REINFORCED TILE BACKER BOARD TO BE INSTALLED IN ALL TUB/SHOWER AREAS.
- WASHER AND DRYER CONNECTIONS TO BE ORIENTED CONSISTENTLY: WASHERS ON LEFT HAND SIDE, DRYERS ON RIGHT HAND SIDE. GC TO VERIFY AND COORDINATE THIS ON MIRRORRED UNITS.
- MINIMUM DIMENSIONS BETWEEN ALL OPPOSING BASE CABINETS, COUNTERTOPS, APPLIANCES, OR WALLS WITHIN THE KITCHEN SHALL BE 40" MINIMUM CLEAR.
- INSTALL FLOORING UNDERLAYMENT UNDER ALL HARD SURFACE FLOORING.
- ALL REACH-IN CLOSETS TO BE 1'-1 1/2" INSIDE CLEAR DEPTH MAX.
- FURNITURE SHOWN FOR DESIGN INTENT ONLY.

**CASEWORK NOTATION LEGEND**

UPPER CABINET	BASE CABINET NOTATION
WIDTH (IN)	WIDTH (IN)
XXXX	XXXX
XXXX	XXXX
XXXX	XXXX
XXXX	XXXX
XXXX	XXXX
XXXX	XXXX
XXXX	XXXX
XXXX	XXXX
XXXX	XXXX
XXXX	XXXX
XXXX	XXXX
XXXX	XXXX
XXXX	XXXX

[1] STANDARD: 3'-0" MAX AFF TO TOP OF COUNTER/SINK  
 [A] ACCESSIBLE - TYPE A: 2'-10" TO TOP OF COUNTER/SINK

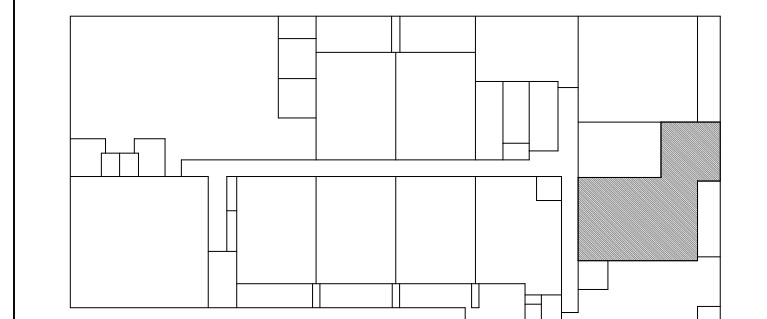
**DESIGN STANDARDS LEGEND**

- FAIR HOUSING ACT GUIDELINES APPLY TO TYPE 'B' FHA DWELLING UNITS.
- INDICATES GUIDELINES FOR SPECIFICATION 'A' BATHROOMS IN THE FAIR HOUSING ACT GUIDELINES.
- INDICATES GUIDELINES FOR SPECIFICATION 'B' BATHROOMS IN THE FAIR HOUSING ACT GUIDELINES.

**WALL NOTATION LEGEND**

WALL GROUP	FRAMING/MASONRY SIZE
E - EXTERIOR WALL	M - 2x4 NOMINAL METAL STUD
P - PARTITION	N - 2x6 NOMINAL METAL STUD
F - FURRING	O - 2x12" C-H STUD
S - SHAFT/WALLSW	P - 2x4/2x4 NOMINAL METAL STUD
	Q - 2x6/2x6 NOMINAL METAL STUD
	R - 2x8/2x8 NOMINAL METAL STUD
	S - 7/8" HAT CHANNELS
	T - 8" NOMINAL CONCRETE MASONRY UNIT
	Z - CONCRETE (REF. STRUCTURAL)

**UNIT KEY PLAN**



PROJECT NUMBER: 20-048  
**ART HOUSE**  
 GSS, LLC  
 313 NORTH BECKLEY AVE  
 Q: TEAM RESPONSE - [2024.05.03]

Revision	By	Date

ISSUE FOR PERMIT: 2023.12.22  
 Issued: YYYMMDD  
 Drawn By: ED  
 Reviewed By: YYYMMDD  
 Permit-Seal  
**PRELIMINARY NOT FOR CONSTRUCTION**  
 Not for permits, pricing or other official purposes.  
 This document has not been completed or checked and is for general information or comment only.  
 2024.05.03  
 Title: UNIT B1 - PLANS AND ELEVATIONS  
 Scale: As indicated  
 Revision: YYYMMDD  
 Drawing No. **A-020**