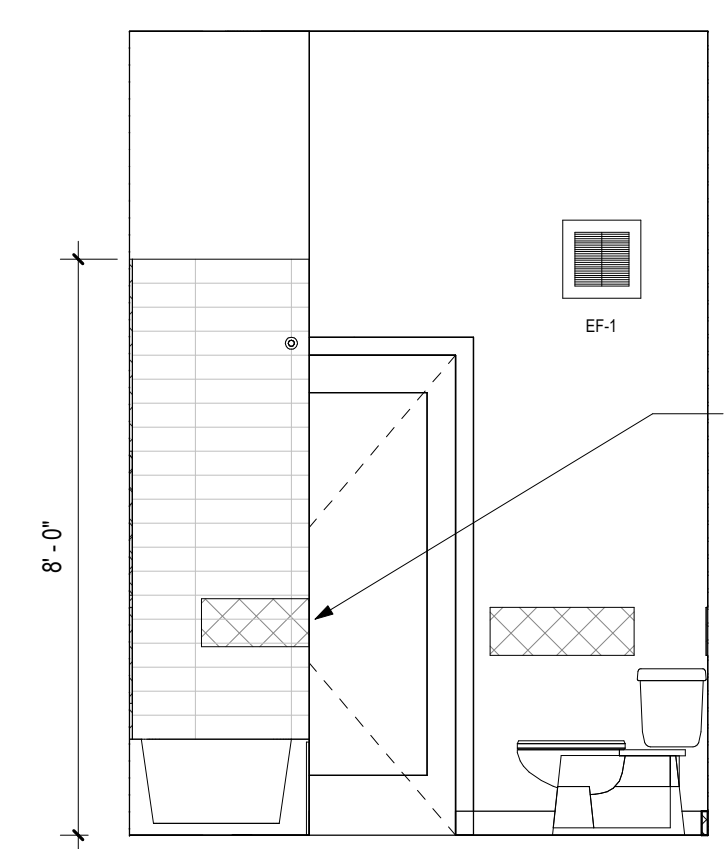




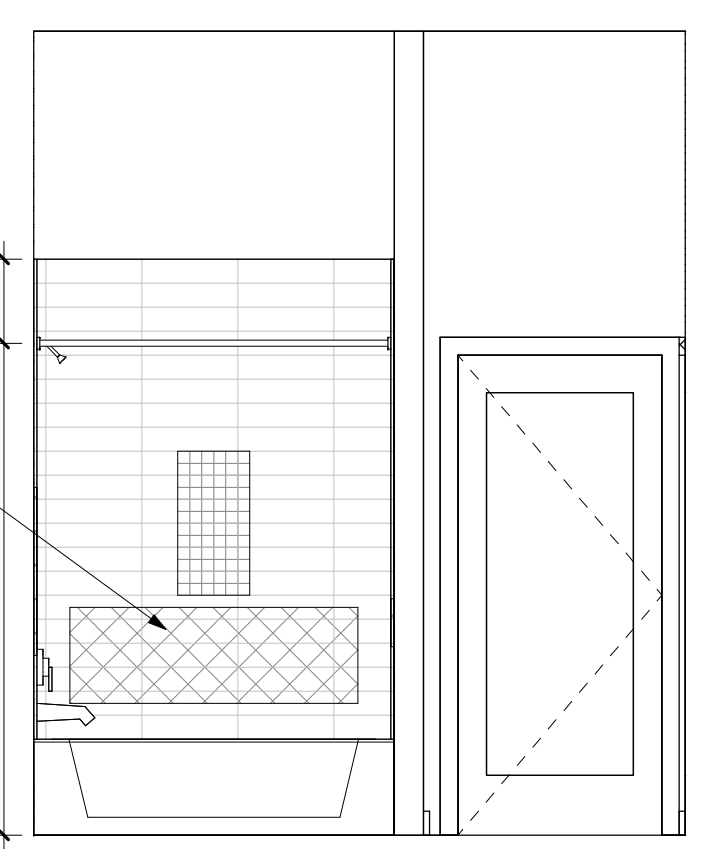
ARCHITECTURE DEMAREST
 2320 Valinda Street, Studio B
 Dallas, TX 75207
 Tel: 214.749.6655
 www.architecture-demarest.com

Copyright Reserved
 This drawing is the property of Architecture Demarest and is not to be reproduced, copied, or used in any way without the written consent of Architecture Demarest. The information on this drawing is based on the information provided and is not to be used for any purpose other than the one intended.

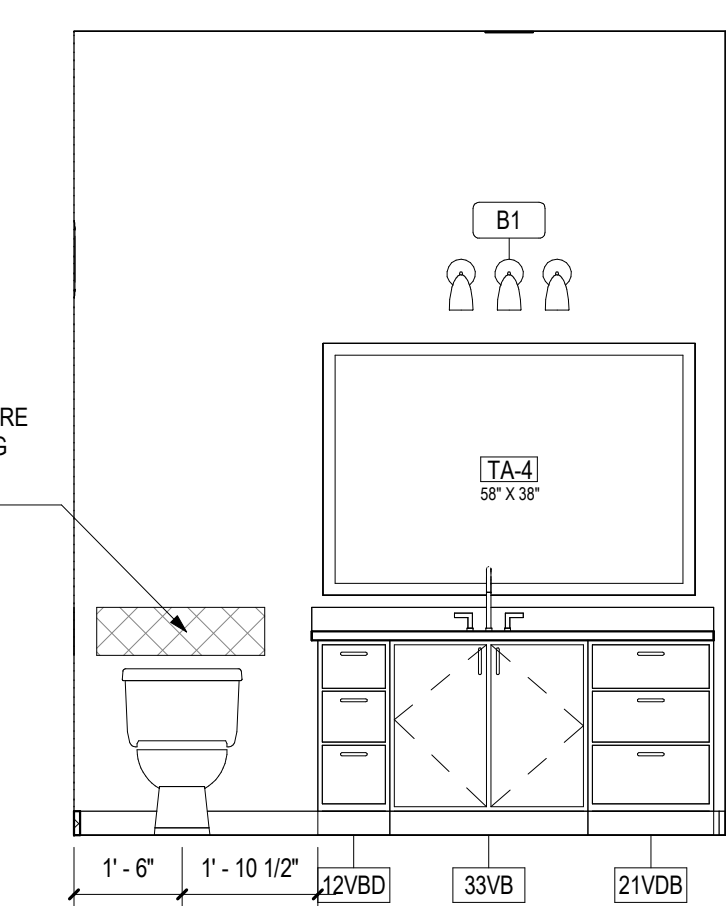
Konstantin



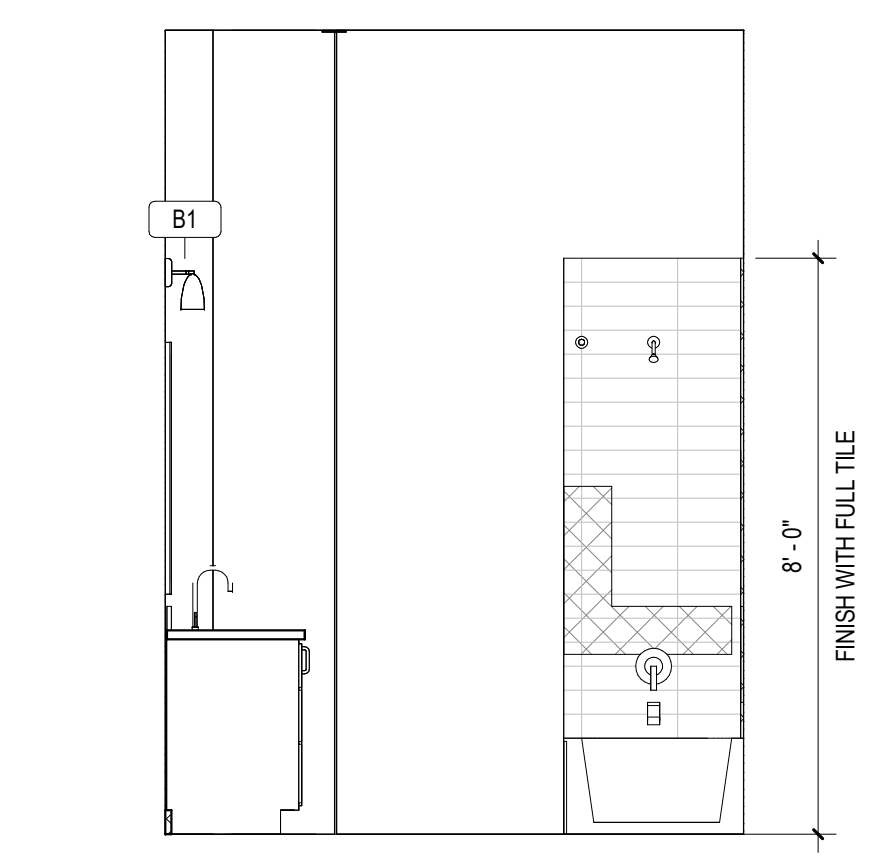
10 Unit A9 Bathroom Elevation 4
 Scale: 3/8" = 1'-0"



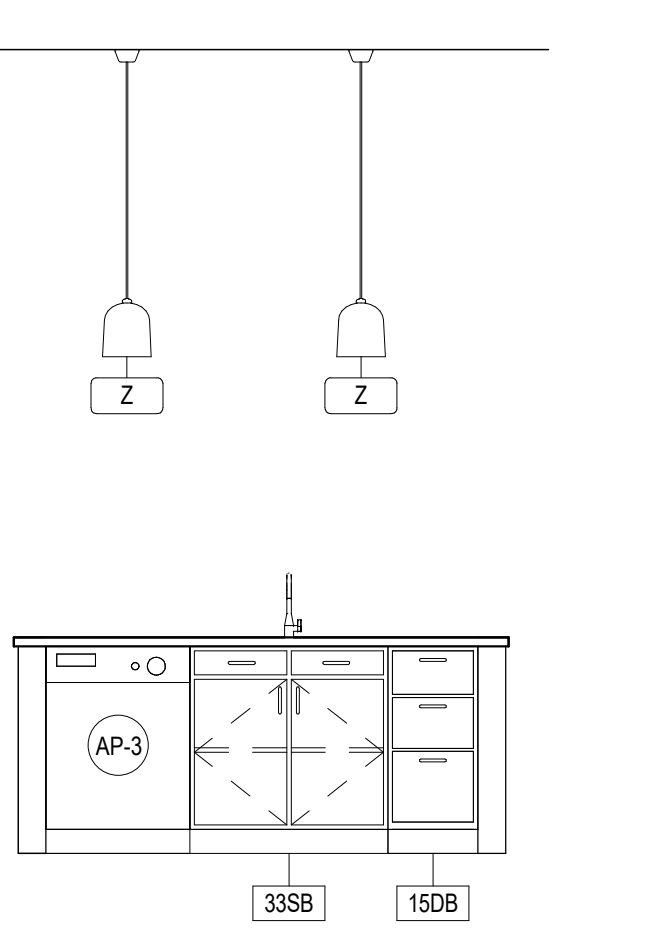
9 Unit A9 Bathroom Elevation 3
 Scale: 3/8" = 1'-0"



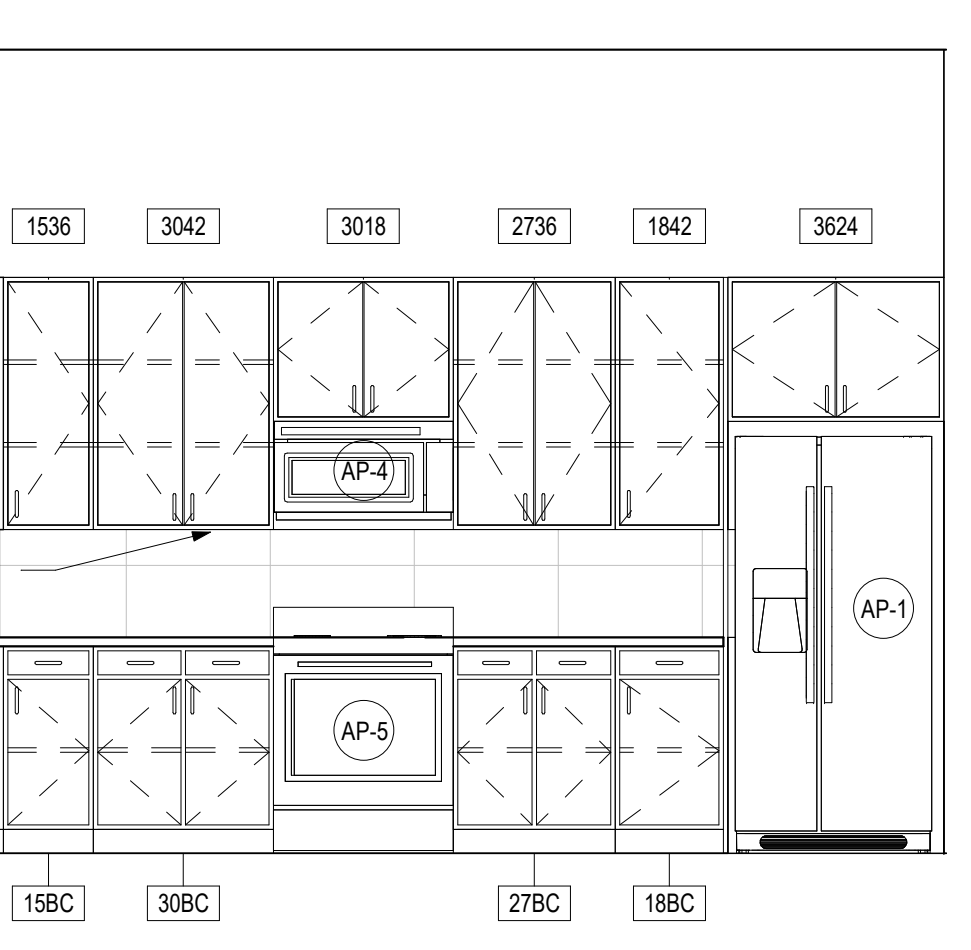
8 Unit A9 Bathroom Elevation 2
 Scale: 3/8" = 1'-0"



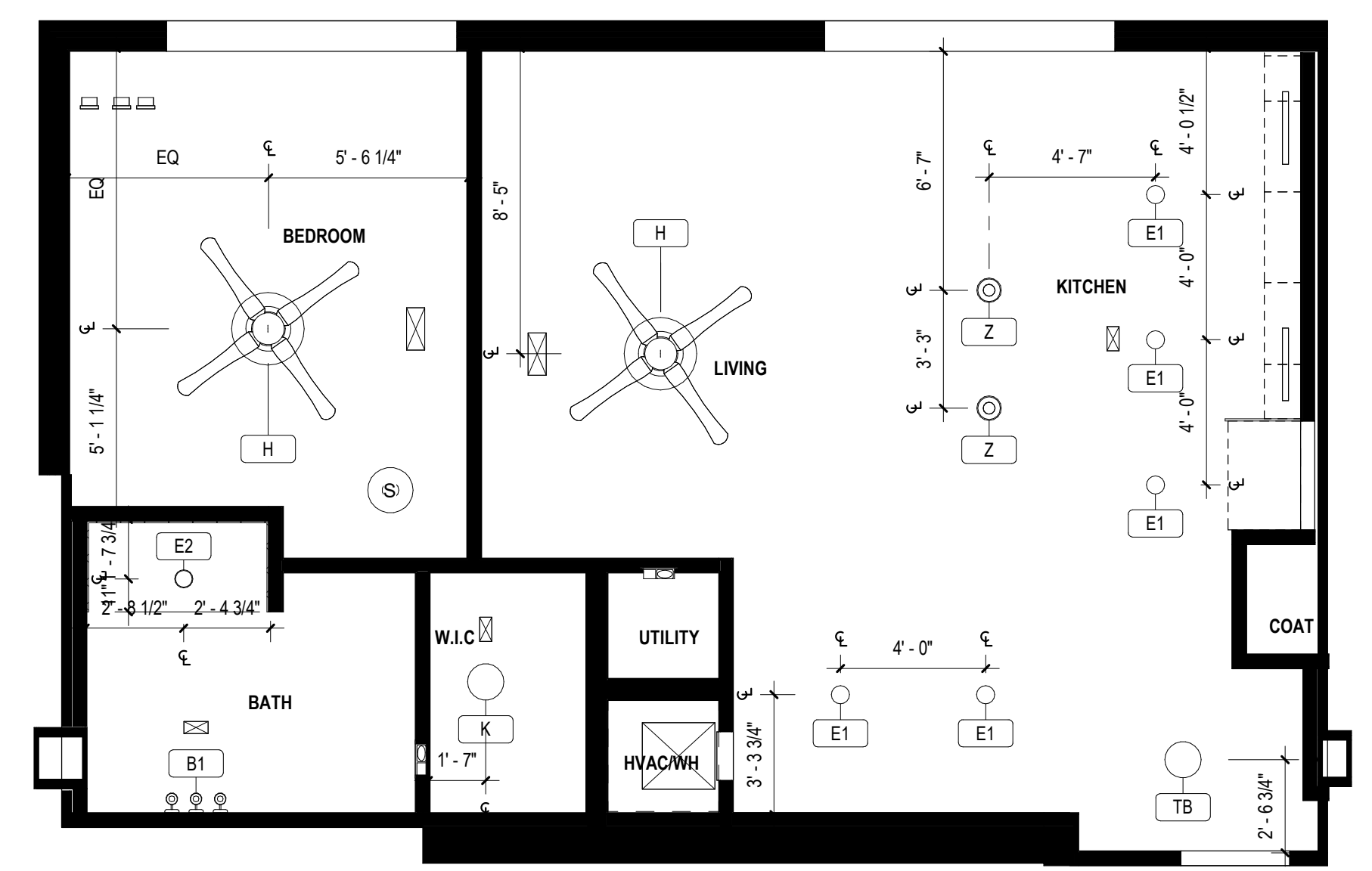
7 Unit A9 Bathroom Elevation 1
 Scale: 3/8" = 1'-0"



5 Unit A9 Kitchen Elevation 2
 Scale: 3/8" = 1'-0"



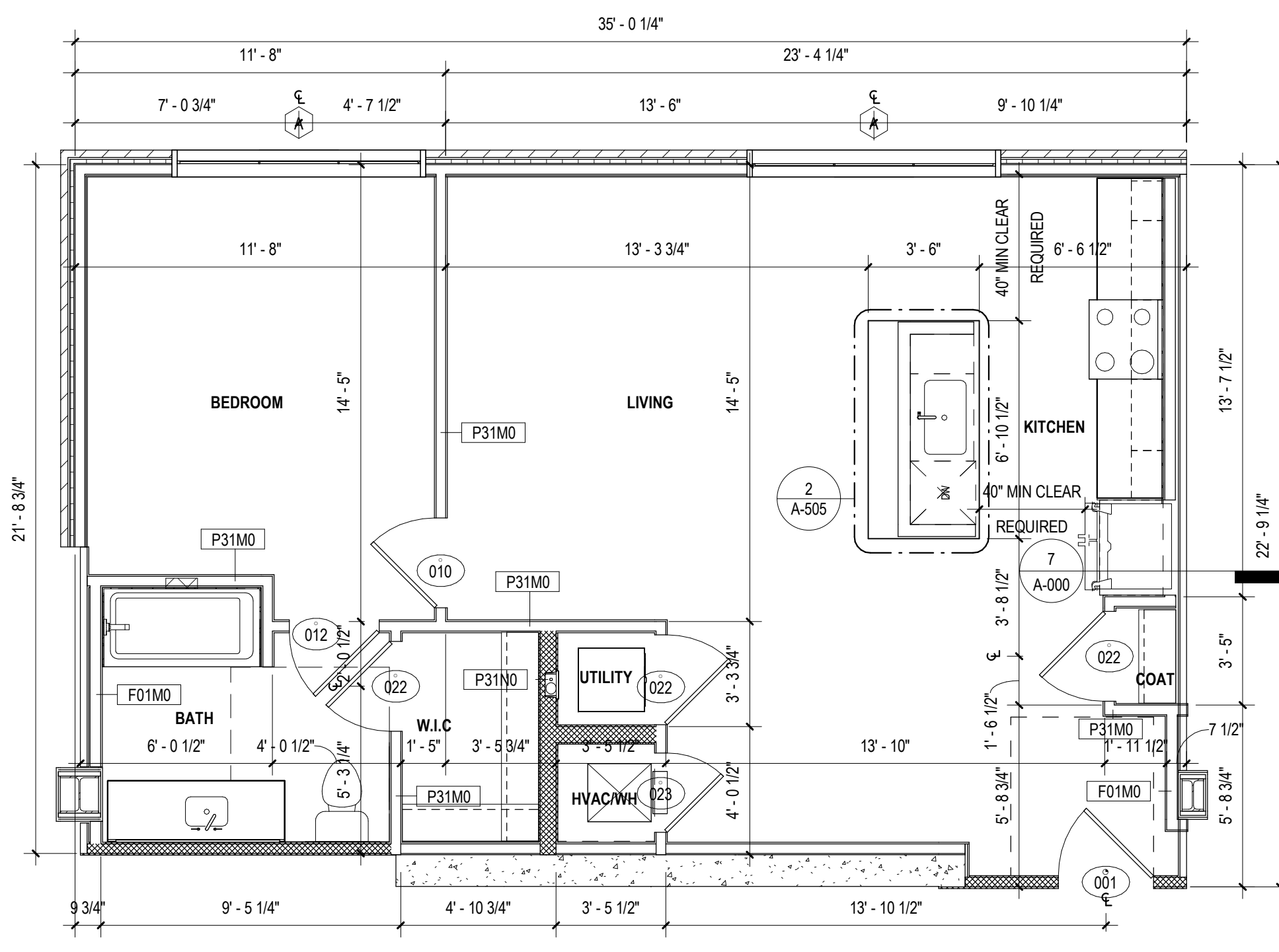
4 Unit A9 Kitchen Elevation 1
 Scale: 3/8" = 1'-0"



3 Unit A9 RCP
 Scale: 1/4" = 1'-0"



2 Unit A9 Finish Plan
 Scale: 1/4" = 1'-0"



1 Unit A9 Plan
 Scale: 1/4" = 1'-0"

UNIT PLAN GENERAL NOTES

1. ALL DIMENSIONS ARE TO FACE OF STUD UNLESS OTHERWISE NOTED. (U.O.N.)
2. PROVIDE BLOCKING FOR ALL WALL-MOUNTED ACCESSORIES AS REQUIRED.
3. ALL ANGLES ARE 45 DEGREES TO THE HORIZONTAL AND VERTICAL U.O.N. TYPICAL ALL UNITS.
4. INSULATION OCCURS IN ALL UNIT FLOOR/CEILING ASSEMBLIES. REFERENCE DETAILS FLO1-FLO2A-740
5. REFER TO SHEETS G-201-G-203 FOR ACCESSIBILITY DESIGN STANDARDS
6. PROVIDE WATER LINE WITH SHUT OFF VALVE AT ALL REFRIGERATOR LOCATIONS FOR ICE MAKER.
7. THRESHOLD AT DOORWAYS SHALL NOT EXCEED 1/2 INCH (13MM), INCLUDING BUT NOT LIMITED TO: ACCESSIBLE BUILDING ENTRIES, UNIT ENTRIES, AND ACCESSIBLE UNIT DOORS.
8. UNIT EXTERIORS VARY. COORDINATE WITH BUILDING ELEVATIONS FOR SIZE AND LOCATION OF FENESTRATION AS WELL AS EXTERIOR CLADDING MATERIALS.
9. SEE BUILDING PLANS FOR CORRIDOR AND DEMISING WALL TYPES
10. REFERENCE SHEET A-730 FOR WALL ASSEMBLIES. LEGEND PROVIDED BELOW FOR QUICK REFERENCE FOR STUD SIZE AND RATING.
11. REFERENCE SHEET A-700 FOR DOOR SCHEDULE. UNIT DOORS ARE SCHEDULED BY TYPE (000 SERIES) AND BUILDING/ANCILLARY DOORS ARE SCHEDULED BY INSTANCE. ARCHITECTURAL DOOR SCHEDULE INDICATES STYLE, DIMENSIONS, BATING, AND HARDWARE TYPES. REFERENCE ID FOR ALL SPECIFICATIONS AND FINISHES AS WELL AS ANY SPECIALTY DOORS.
12. INSTALL BLOCKING FOR FUTURE GRAB BAR MOUNTING IN ALL UNIT BATHROOMS IN ACCORDANCE WITH ANSI 2017 AND FAIR HOUSING ACCESSIBILITY DESIGN STANDARDS. REFERENCE G-201 FOR REQUIREMENTS.
13. INTERIOR DOORS SHOWN IN THE CORNER OF A SPACE ARE ASSUMED TO BE 4 INCHES FROM THE CORNER WALL STUD AND NEED NOT BE DIMENSIONED U.O.N.
14. FURR-DOWNS MAY BE CONSTRUCTED USING ANY MATERIALS PERMITTED BY THE CONSTRUCTION TYPE AS DEFINED BY IBC. HOWEVER MATERIALS EXPOSED TO AIR FLOW (EXAMPLE: RETURN AIR PLENUM) MUST BE NON-COMBUSTIBLE OR MEET THE 2500 FLAME SPREAD/SMOKE-DEVELOPED INDICES AS PER IMC 2018 SECTION 602.2.
15. KITCHEN BASE CABINETS ARE 24" DEEP, AND BATHROOM BASE CABINETS ARE 21" DEEP U.O.N.
16. INSULATE WALLS AT ALL PLUMBING RISERS
17. COORDINATE ALL FRAMING DIMENSIONS WITH THE FINAL FIXTURES SUPPLIED.
18. FIBERGLASS REINFORCED TILE BACKER BOARD TO BE INSTALLED IN ALL TUB/SHOWER AREAS.
19. WASHER AND DRYER CONNECTIONS TO BE ORIENTED CONSISTENTLY. WASHERS ON LEFT HAND SIDE, DRYERS ON RIGHT HAND SIDE. GC TO VERIFY AND COORDINATE THIS ON MIRRORRED UNITS.
20. MINIMUM DIMENSIONS BETWEEN ALL OPPOSING BASE CABINETS, COUNTERTOPS, APPLIANCES, OR WALLS WITHIN THE KITCHEN SHALL BE 40" MINIMUM CLEAR.
21. INSTALL FLOORING UNDERLAYMENT UNDER ALL HARD SURFACE FLOORING.
22. ALL REACH-IN CLOSETS TO BE 11-11" INSIDE CLEAR DEPTH MAX.
23. FURNITURE SHOWN FOR DESIGN INTENT ONLY

CASEWORK NOTATION LEGEND

UPPER CABINET		BASE CABINET NOTATION	
WIDTH (IN)	HEIGHT (IN)	WIDTH (IN)	
XXXX	XXXX	XXXX	BASE CABINET
	XXXX	XXXX	DRAWER BASE
	XXXX	XXXX	VANITY BASE
	XXXX	XXXX	VANITY DRAWER BASE
	XXXX	XXXX	VANITY SINK BASE
	XXXX	XXXX	VANITY SINK BASE FINISHED END
	XXXX	XXXX	FP

[1] STANDARD: 3'-0" MAX AFF TO TOP OF COUNTERTOP/SINK
 [A] ACCESSIBLE - TYPE A: 2'-10" TO TOP OF COUNTERTOP

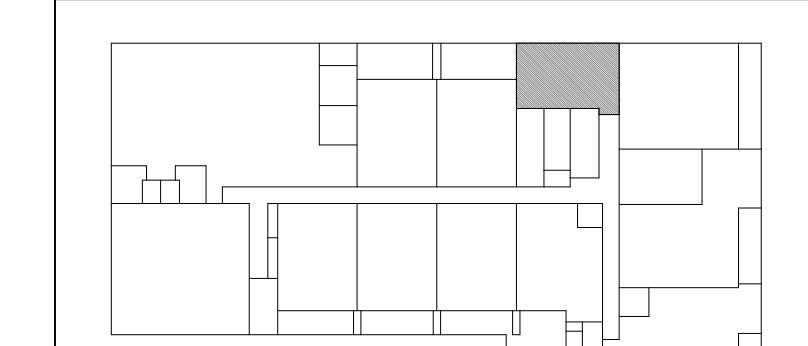
DESIGN STANDARDS LEGEND

- FAIR HOUSING ACT GUIDELINES APPLY TO TYPE 'B' FHA DWELLING UNITS.
- INDICATES GUIDELINES FOR SPECIFICATION 'A' BATHROOMS IN THE FAIR HOUSING ACT GUIDELINES.
- INDICATES GUIDELINES FOR SPECIFICATION 'B' BATHROOMS IN THE FAIR HOUSING ACT GUIDELINES.

WALL NOTATION LEGEND

WALL GROUP (SEE BELOW)		FRAMING/MASONRY SIZE (SEE BELOW)	
E - EXTERIOR WALL	P - PARTITION	R - FIRE RATING (SEE SCHEDULE)	PARTITION NUMBER (REFER TO DETAILS)
F - FURRING	S - SHAFT/WALL/ASW	FRAMING/MASONRY SIZE	
		M - 2x4 NOMINAL METAL STUD	
		N - 2x6 NOMINAL METAL STUD	
		O - 2-1/2" C-H STUD	
		P - 2x4/2x4 NOMINAL METAL STUD	
		Q - 2x6/2x6 NOMINAL METAL STUD	
		R - 2x6/2x6 NOMINAL METAL STUD	
		S - 7/8" HAT CHANNELS	
		U - 4" NOMINAL CONCRETE MASONRY UNIT	
		Z - CONCRETE (REF. STRUCTURAL)	

UNIT KEY PLAN



PROJECT NUMBER: 20-048
ART HOUSE
 GSS, LLC
 313 NORTH BECKLEY AVE
 Q-TEAM RESPONSE - [2024.05.03]

Revision	YYYYMMDD
ISSUE FOR PERMIT	2023 12 22
Issued	YYYYMMDD

Drawn By	ED	Reviewed By	
Permit-Seal			

PRELIMINARY
 NOT FOR CONSTRUCTION
 Not for permits, pricing or other official purposes.
 This document has not been completed or checked and is for general information or comment only.
 2024.05.03

Title
UNIT A9 - PLANS AND ELEVATIONS

Scale
 As indicated

Revision
 Drawing No.

A-018